

# MIER1 Rabbit Polyclonal Antibody



**CAB18480**

---

## Product Information

### Size:

20uL, 50uL, 100uL, 200uL

### Observed MW:

58kDa

### Calculated MW:

9kDa/42-63kDa

### Applications:

WB IHC

### Reactivity:

Human, Mouse

## Antibody Information

### Recommended dilutions:

WB 1:500 - 1:2000 IHC 1:50  
- 1:200

### Source:

Rabbit

### Isotype:

IgG

### Purification:

Affinity purification

## Protein Background

This gene encodes a protein that was first identified in *Xenopus laevis* by its role in a mesoderm induction early response (MIER). The encoded protein functions as a transcriptional regulator. Alternatively spliced transcript variants encode multiple isoforms, some of which lack a C-terminal nuclear localization signal.

## Immunogen information

### Gene ID:

57708

### Uniprot

Q8N108

### Synonyms:

ER1; MI-ER1; MIER1

### Immunogen:

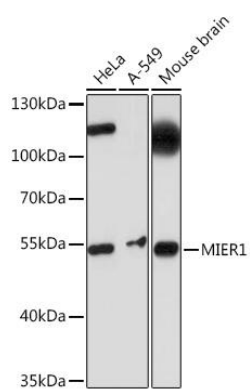
Recombinant protein of human MIER1.

### Storage:

Store at -20°C. Avoid freeze / thaw cycles. Buffer: PBS with 0.02% sodium azide, 50% glycerol, pH7.3.

## Product Images

---



Western blot - MIER1 Rabbit pAb (CAB18480)