

CES1 Rabbit Polyclonal Antibody



CAB1853

Product Information

Size:

20uL, 50uL, 100uL, 200uL

Observed MW:

63kDa

Calculated MW:

62kDa

Applications:

WB IHC

Reactivity:

Human, Mouse

Antibody Information

Recommended dilutions:

WB 1:500 - 1:2000 IHC 1:50
- 1:200

Source:

Rabbit

Isotype:

IgG

Purification:

Affinity purification

Protein Background

This gene encodes a member of the carboxylesterase large family. The family members are responsible for the hydrolysis or transesterification of various xenobiotics, such as cocaine and heroin, and endogenous substrates with ester, thioester, or amide bonds. They may participate in fatty acyl and cholesterol ester metabolism, and may play a role in the blood-brain barrier system. This enzyme is the major liver enzyme and functions in liver drug clearance. Mutations of this gene cause carboxylesterase 1 deficiency. Three transcript variants encoding three different isoforms have been found for this gene.

Immunogen information

Gene ID:

1066

Uniprot

P23141

Synonyms:

CES1; ACAT; CE-1; CEH; CES2; HMSE; HMSE1; PCE-1; REH; SES1;
TGH; hCE-1

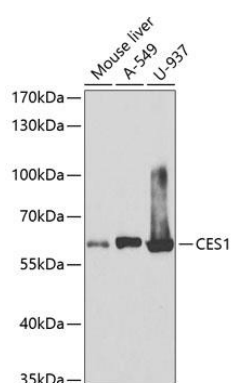
Immunogen:

Recombinant fusion protein containing a sequence corresponding to amino acids 287-566 of human CES1 (NP_001257.4).

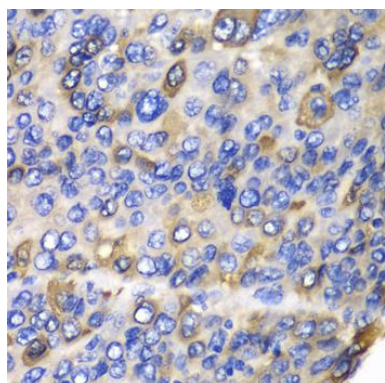
Storage:

Store at -20°C. Avoid freeze / thaw cycles. Buffer: PBS with 0.02% sodium azide, 50% glycerol, pH7.3.

Product Images



Western blot analysis of extracts of various cell lines, using CES1 antibody (CAB1853) at 1:1000 dilution. Secondary antibody: HRP Goat Anti-Rabbit IgG (H+L) (CABS014) at 1:10000 dilution. Lysates/proteins: 25ug per lane. Blocking buffer: 3% nonfat dry milk in TBST.



Immunohistochemistry of paraffin-embedded human liver cancer using CES1 antibody (CAB1853) at dilution of 1:100 (40x lens).