

# PIGU Rabbit Polyclonal Antibody



**CAB18538**

---

## Product Information

### Size:

20uL, 50uL, 100uL, 200uL

### Observed MW:

50kDa

### Calculated MW:

### Applications:

WB IHC IF

### Reactivity:

Human, Mouse, Rat

## Antibody Information

### Recommended dilutions:

WB 1:500 - 1:2000 IHC 1:50  
- 1:200 IF 1:50 - 1:200

### Source:

Rabbit

### Isotype:

IgG

### Purification:

Affinity purification

## Protein Background

### Immunogen information

#### Gene ID:

128869

#### Uniprot

Q9H490

#### Synonyms:

CDC91L1; GAB1; PIGU

#### Immunogen:

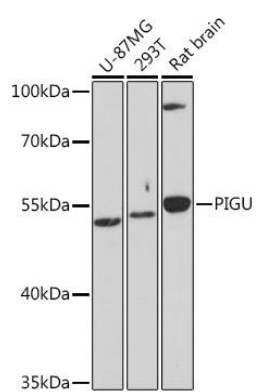
Recombinant protein of human PIGU.

#### Storage:

Store at -20°C. Avoid freeze / thaw cycles. Buffer: PBS with 0.02% sodium azide, 50% glycerol, pH7.3.

## Product Images

---



Western blot - PIGU Rabbit pAb (CAB18538)