

RNASE3 Rabbit Polyclonal Antibody



CAB1854

Product Information

Size:

20uL, 50uL, 100uL, 200uL

Observed MW:

Calculated MW:

18kDa

Applications:

IHC

Reactivity:

Human

Protein Background

The protein encoded by this gene belongs to the pancreatic ribonuclease family, a subset of the ribonuclease A superfamily. The protein exhibits antimicrobial activity against pathogenic bacteria

Immunogen information

Gene ID:

6037

Uniprot

P12724

Synonyms:

RNASE3; ECP; RAF1; RNS3

Antibody Information

Recommended dilutions:

IHC 1:50 - 1:100

Source:

Rabbit

Isotype:

IgG

Purification:

Affinity purification

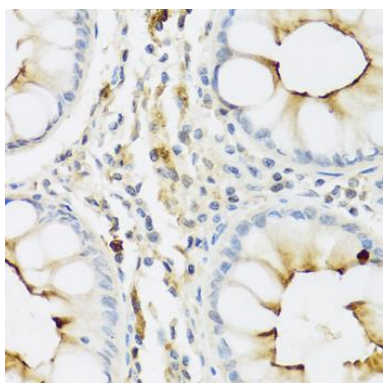
Immunogen:

Recombinant fusion protein containing a sequence corresponding to amino acids 28-160 of human RNASE3 (NP_002926.2).

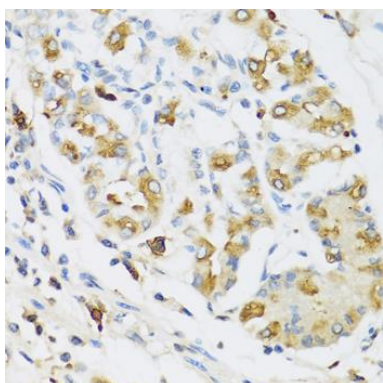
Storage:

Store at -20°C. Avoid freeze / thaw cycles. Buffer: PBS with 0.02% sodium azide, 50% glycerol, pH7.3.

Product Images



Immunohistochemistry of paraffin-embedded human colon using RNASE3 antibody (CAB1854) at dilution of 1:100 (40x lens).



Immunohistochemistry of paraffin-embedded human stomach using RNASE3 antibody (CAB1854) at dilution of 1:100 (40x lens).