

# HSPA1L Rabbit Polyclonal Antibody



CAB1856

## Product Information

### Size:

20uL, 50uL, 100uL, 200uL

### Observed MW:

67kDa

### Calculated MW:

70kDa

### Applications:

WB IF

### Reactivity:

Human, Mouse

## Protein Background

This gene encodes a 70kDa heat shock protein. In conjunction with other heat shock proteins, this protein stabilizes existing proteins against aggregation and mediates the folding of newly translated proteins in the cytosol and in organelles. The gene is located in the major histocompatibility complex class III region, in a cluster with two closely related genes which also encode isoforms of the 70kDa heat shock protein.

## Immunogen information

### Gene ID:

3305

### Uniprot

P34931

### Synonyms:

HSPA1L; HSP70-1L; HSP70-HOM; HSP70T; hum70t

## Antibody Information

### Recommended dilutions:

WB 1:500 - 1:2000 IF 1:50 - 1:200

### Source:

Rabbit

### Isotype:

IgG

### Purification:

Affinity purification

### Immunogen:

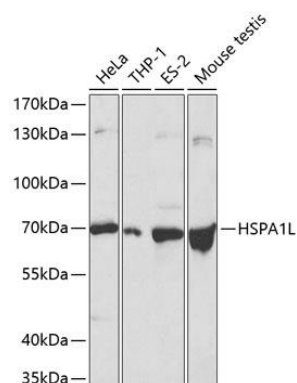
Recombinant fusion protein containing a sequence corresponding to amino acids 342-641 of human HSPA1L (NP\_005518.3).

### Storage:

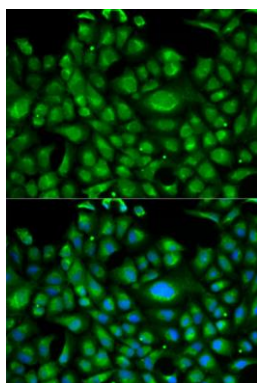
Store at -20°C. Avoid freeze / thaw cycles. Buffer: PBS with 0.02% sodium azide, 50% glycerol, pH7.3.

## Product Images

---



Western blot analysis of extracts of various cell lines, using HSPA1L antibody (CAB1856) at 1:500 dilution. Secondary antibody: HRP Goat Anti-Rabbit IgG (H+L) (CABS014) at 1:10000 dilution. Lysates/proteins: 25ug per lane. Blocking buffer: 3% nonfat dry milk in TBST.



Immunofluorescence analysis of U2OS cells using HSPA1L antibody (CAB1856). Blue: DAPI for nuclear staining.