

PPP2R2B/PPP2R2C Rabbit Polyclonal Antibody



CAB18572

Product Information

Size:

20uL, 50uL, 100uL, 200uL

Observed MW:

52kDa

Calculated MW:

Applications:

WB

Reactivity:

Human, Mouse, Rat

Antibody Information

Recommended dilutions:

WB 1:500 - 1:2000

Source:

Rabbit

Isotype:

IgG

Purification:

Affinity purification

Protein Background

Immunogen information

Gene ID:

5521/5522

Uniprot

Q00005/Q9Y2T4

Synonyms:

PPP2R2B/PPP2R2C

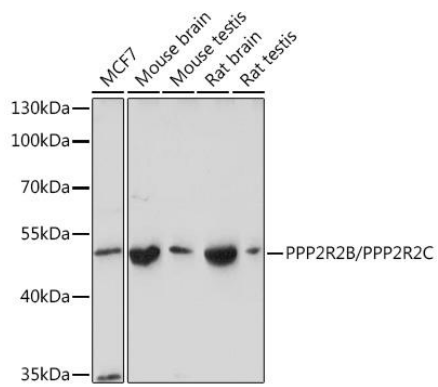
Immunogen:

Recombinant protein of human PPP2R2B/PPP2R2C.

Storage:

Store at -20°C. Avoid freeze / thaw cycles. Buffer: PBS with 0.02% sodium azide, 50% glycerol, pH7.3.

Product Images



Western blot - PPP2R2B/PPP2R2C Rabbit pAb (CAB18572)