

LIG1 Rabbit Polyclonal Antibody



CAB1858

Product Information

Size:

20uL, 50uL, 100uL, 200uL

Observed MW:

140KDa

Calculated MW:

88kDa/98kDa/101kDa

Applications:

WB IHC IF

Reactivity:

Human, Mouse

Antibody Information

Recommended dilutions:

WB 1:500 - 1:2000 IHC 1:50
- 1:200 IF 1:50 - 1:200

Source:

Rabbit

Isotype:

IgG

Purification:

Affinity purification

Protein Background

This gene encodes a member of the ATP-dependent DNA ligase protein family. The encoded protein functions in DNA replication, recombination, and the base excision repair process. Mutations in this gene that lead to DNA ligase I deficiency result in immunodeficiency and increased sensitivity to DNA-damaging agents. Disruption of this gene may also be associated with a variety of cancers. Alternative splicing results in multiple transcript variants.

Immunogen information

Gene ID:

3978

Uniprot

P18858

Synonyms:

LIG1

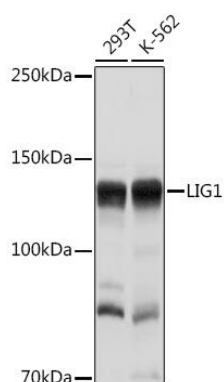
Immunogen:

Recombinant fusion protein containing a sequence corresponding to amino acids 565-790 of human LIG1 (NP_000225.1).

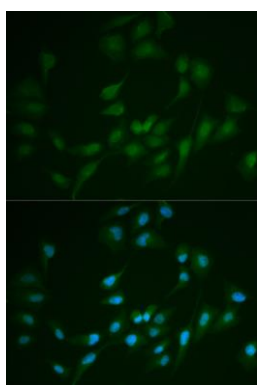
Storage:

Store at -20°C. Avoid freeze / thaw cycles. Buffer: PBS with 0.02% sodium azide, 50% glycerol, pH7.3.

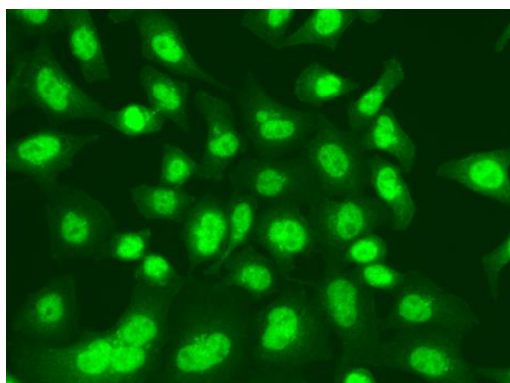
Product Images



Western blot analysis of extracts of various cell lines, using LIG1 Rabbit pAb (CAB1858) at 1:1000 dilution. Secondary antibody: HRP Goat Anti-Rabbit IgG (H+L) (CABS014) at 1:10000 dilution. Lysates/proteins: 25ug per lane. Blocking buffer: 3% nonfat dry milk in TBST. Detection: ECL Basic Kit (CABM00020). Exposure time: 1s.



Immunofluorescence analysis of MCF-7 cells using LIG1 antibody (CAB1858). Blue: DAPI for nuclear staining.



Immunofluorescence analysis of A549 cells using LIG1 antibody (CAB1858).