

SLC22A3 Rabbit Polyclonal Antibody



CAB18588

Product Information

Size:

20uL, 50uL, 100uL, 200uL

Observed MW:

61kDa

Calculated MW:

Applications:

WB

Reactivity:

Mouse

Antibody Information

Recommended dilutions:

WB 1:500 - 1:2000

Source:

Rabbit

Isotype:

IgG

Purification:

Affinity purification

Protein Background

Immunogen information

Gene ID:

6581

Uniprot

O75751

Synonyms:

EMT; EMTH; OCT3; SLC22A3

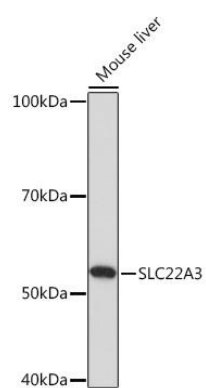
Immunogen:

Recombinant protein of human SLC22A3.

Storage:

Store at -20°C. Avoid freeze / thaw cycles. Buffer: PBS with 0.02% sodium azide, 50% glycerol, pH7.3.

Product Images



Western blot - SLC22A3 Rabbit pAb (CAB18588)