

CD31/PECAM1 Rabbit Monoclonal Antibody



CAB18643

Product Information

Size:

20uL

Observed MW:

140kDa

Calculated MW:

79kDa/80kDa/81kDa/82kDa

Applications:

WB IF IP

Reactivity:

Human

Protein Background

The protein encoded by this gene is found on the surface of platelets, monocytes, neutrophils, and some types of T-cells, and makes up a large portion of endothelial cell intercellular junctions. The encoded protein is a member of the immunoglobulin superfamily and is likely involved in leukocyte migration, angiogenesis, and integrin activation.

Immunogen information

Gene ID:

5175

Uniprot

P16284

Synonyms:

CD31; PECA1; GPIIA'; PECAM-1; endoCAM; CD31/EndoCAM

Antibody Information

Recommended dilutions:

WB 1:500 - 1:2000 IF 1:50 - 1:200 IP 1:50 - 1:200

Source:

Rabbit

Isotype:

IgG

Purification:

Affinity purification

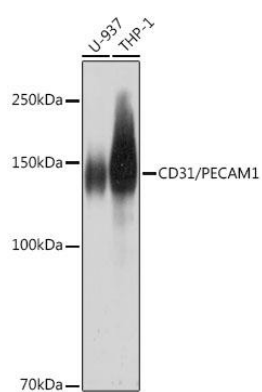
Immunogen:

Recombinant protein of human CD31/PECAM1.

Storage:

Store at -20°C. Avoid freeze / thaw cycles. Buffer: PBS with 0.02% sodium azide, 0.05% BSA, 50% glycerol, pH7.3.

Product Images



Western blot - CD31/PECAM1 Rabbit mAb (CAB18643)