

# MonoMethyl-YAP1-K342 Rabbit Polyclonal Antibody

## CAB18651



### Product Information

**Size:**

20uL, 50uL, 100uL, 200uL

**Observed MW:**

70kDa

**Calculated MW:**

36kDa/48kDa/49kDa/50kDa/  
52kDa/53kDa/54kDa

**Applications:**

WB

**Reactivity:**

Human, Mouse, Rat

### Antibody Information

**Recommended dilutions:**

WB 1:500 - 1:2000

**Source:**

Rabbit

**Isotype:**

IgG

**Purification:**

Affinity purification

### Protein Background

This gene encodes a downstream nuclear effector of the Hippo signaling pathway which is involved in development, growth, repair, and homeostasis. This gene is known to play a role in the development and progression of multiple cancers as a transcriptional regulator of this signaling pathway and may function as a potential target for cancer treatment. Alternative splicing results in multiple transcript variants encoding different isoforms.

### Immunogen information

**Gene ID:**

10413

**Uniprot**

P46937

**Synonyms:**

YAP1; COB1; YAP; YAP2; YAP65; YKI; Yes associated protein 1

**Immunogen:**

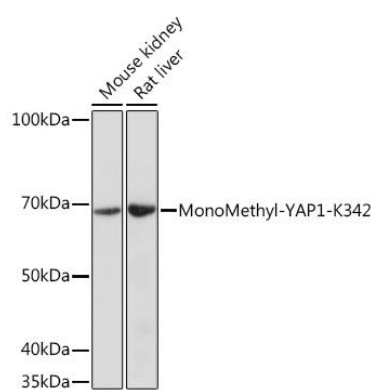
A synthetic monomethylated peptide around K342 of human YAP1 (NP\_001123617.1).

**Storage:**

Store at -20°C. Avoid freeze / thaw cycles. Buffer: PBS with 0.02% sodium azide, 50% glycerol, pH7.3.

## Product Images

---



Western blot - MonoMethyl-YAP1-K342 Rabbit pAb (CAB18651)