

WWC2 Rabbit Polyclonal Antibody



CAB18668

Product Information

Size:

50uL, 100uL, 200uL

Observed MW:

134kDa

Calculated MW:

Applications:

WB IHC

Reactivity:

Human, Mouse, Rat

Protein Background

This gene encodes a member of the WW-and-C2-domain-containing family of proteins. Members of this family have two N-terminal WW domains that mediate binding to target proteins harboring L/PPxY motifs, an internal C2 domain for membrane association, and C-terminal alpha protein kinase C binding sites and class III PDZ domain-interaction motifs. Proteins of this family are able to form homo- and heterodimers and to modulate hippo pathway signaling. [provided by RefSeq, Sep 2016]

Immunogen information

Gene ID:

80014

Uniprot

Q6AWC2

Synonyms:

BOMB

Antibody Information

Recommended dilutions:

WB 1:500 - 1:2000 IHC 1:50
- 1:200

Source:

Rabbit

Isotype:

IgG

Immunogen:

Recombinant protein of human WWC2.

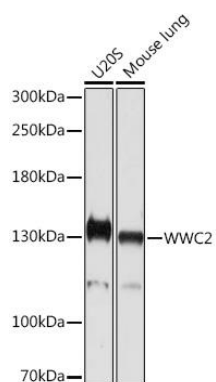
Storage:

Store at -20°C. Avoid freeze / thaw cycles. Buffer: PBS with 0.02% sodium azide, 50% glycerol, pH7.3.

Purification:

Affinity purification

Product Images



Western blot - WWC2 Rabbit pAb (CAB18668)