

# PIGO Rabbit Polyclonal Antibody



CAB18670

## Product Information

### Size:

50uL, 100uL, 200uL

### Observed MW:

119kDa

### Calculated MW:

73kDa/118kDa

### Applications:

WB

### Reactivity:

Human, Mouse

## Protein Background

This gene encodes a protein that is involved in glycosylphosphatidylinositol (GPI)-anchor biosynthesis. The GPI-anchor is a glycolipid which contains three mannose molecules in its core backbone. The GPI-anchor is found on many blood cells and serves to anchor proteins to the cell surface. This protein is involved in the transfer of ethanolaminephosphate (EtNP) to the third mannose in GPI. At least three alternatively spliced transcripts encoding two distinct isoforms have been found for this gene.

## Immunogen information

### Gene ID:

84720

### Uniprot

Q8TEQ8

### Synonyms:

PIGO; HPMRS2; GPI ethanolamine phosphate transferase 3

## Antibody Information

### Recommended dilutions:

WB 1:500 - 1:2000

### Source:

Rabbit

### Isotype:

IgG

### Purification:

Affinity purification

### Immunogen:

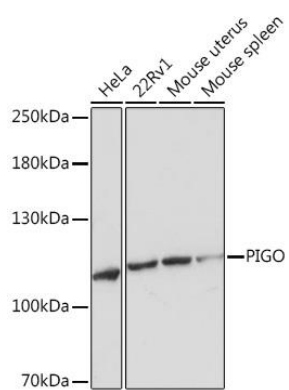
Recombinant protein of human PIGO.

### Storage:

Store at -20°C. Avoid freeze / thaw cycles. Buffer: PBS with 0.02% sodium azide, 50% glycerol, pH7.3.

## Product Images

---



Western blot - PIGO Rabbit pAb (CAB18670)