

# SPAG11A Rabbit Polyclonal Antibody



CAB18673

---

## Product Information

### Size:

50uL, 100uL, 200uL

### Observed MW:

17kDa

### Calculated MW:

8kDa/9kDa/12kDa/13kDa

### Applications:

WB

### Reactivity:

Mouse, Rat

## Antibody Information

### Recommended dilutions:

WB 1:500 - 1:2000

### Source:

Rabbit

### Isotype:

IgG

### Purification:

Affinity purification

## Protein Background

### Immunogen information

#### Gene ID:

653423

#### Uniprot

Q6PDA7

#### Synonyms:

SPAG11A; EDDM2A; HE2; sperm-associated antigen 11A

#### Immunogen:

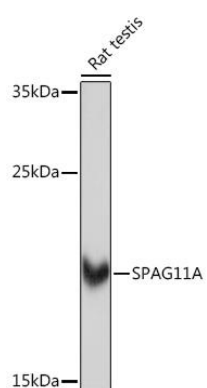
Recombinant protein of human SPAG11A.

#### Storage:

Store at -20°C. Avoid freeze / thaw cycles. Buffer: PBS with 0.02% sodium azide, 50% glycerol, pH7.3.

## Product Images

---



Western blot - SPAG11A Rabbit pAb (CAB18673)