

**[KO Validated] CASP9 Rabbit Monoclonal Antibody**  
**CAB18676**



---

**Product Information**

**Size:**

20uL

**Observed MW:**

43kDa/45kDa

**Calculated MW:**

17kDa/30kDa/36kDa/46kDa

**Applications:**

WB IF

**Reactivity:**

Human, Mouse, Rat

**Protein Background**

This gene encodes a member of the cysteine-aspartic acid protease (caspase) family. Sequential activation of caspases plays a central role in the execution-phase of cell apoptosis. Caspases exist as inactive proenzymes which undergo proteolytic processing at conserved aspartic residues to produce two subunits, large and small, that dimerize to form the active enzyme. This protein can undergo autoproteolytic processing and activation by the apoptosome, a protein complex of cytochrome c and the apoptotic peptidase activating factor 1; this step is thought to be one of the earliest in the caspase activation cascade. This protein is thought to play a central role in apoptosis and to be a tumor suppressor. Alternative splicing results in multiple transcript variants.

**Immunogen information**

**Gene ID:**

842

**Uniprot**

P55211

**Antibody Information**

**Recommended dilutions:**

WB 1:500 - 1:2000 IF 1:50 - 1:200

**Source:**

Rabbit

**Synonyms:**

CASP9; APAF-3; APAF3; ICE-LAP6; MCH6; PPP1R56; caspase-9

**Immunogen:**

A synthesized peptide derived from human CASP9.

**Isotype:**

IgG

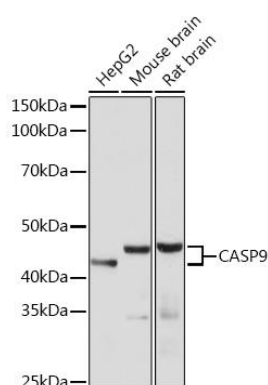
**Storage:**

Store at -20°C. Avoid freeze / thaw cycles. Buffer: PBS with 0.02% sodium azide, 0.05% BSA, 50% glycerol, pH7.3.

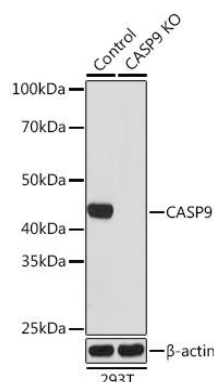
**Purification:**

Affinity purification

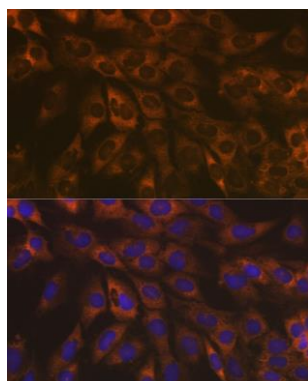
## Product Images



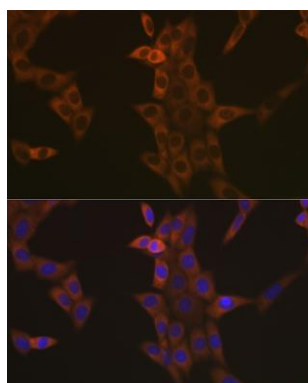
Western blot analysis of extracts of various cell lines, using CASP9 antibody (CAB18676) at 1:1000 dilution. Secondary antibody: HRP Goat Anti-Rabbit IgG (H+L) (CABS014) at 1:10000 dilution. Lysates/proteins: 25ug per lane. Blocking buffer: 3% nonfat dry milk in TBST. Detection: ECL Basic Kit (CABM00020). Exposure time: 30s.



Western blot analysis of extracts from normal (control) and CASP9 knockout (KO) 293T cells, using CASP9 antibody (CAB18676) at 1:1000 dilution. Secondary antibody: HRP Goat Anti-Rabbit IgG (H+L) (CABS014) at 1:10000 dilution. Lysates/proteins: 25ug per lane. Blocking buffer: 3% nonfat dry milk in TBST. Detection: ECL Basic Kit (CABM00020). Exposure time: 30s.



Immunofluorescence analysis of C6 cells using [KO Validated] CASP9 Rabbit mAb (CAB18676) at dilution of 1:100 (40x lens). Blue: DAPI for nuclear staining.



Immunofluorescence analysis of NIH-3T3 cells using [KO Validated] CASP9 Rabbit mAb (CAB18676) at dilution of 1:100 (40x lens). Blue: DAPI for nuclear staining.