

ATG16L1 Rabbit Polyclonal Antibody



CAB1871

Product Information

Size:

20uL, 50uL, 100uL, 200uL

Observed MW:

68kDa

Calculated MW:

47kDa/49kDa/53kDa/66kDa/
68kDa

Applications:

WB IHC IF

Reactivity:

Human, Mouse

Protein Background

The protein encoded by this gene is part of a large protein complex that is necessary for autophagy, the major process by which intracellular components are targeted to lysosomes for degradation. Defects in this gene are a cause of susceptibility to inflammatory bowel disease type 10 (IBD10). Several transcript variants encoding different isoforms have been found for this gene.

Immunogen information

Gene ID:

55054

Uniprot

Q676U5

Synonyms:

ATG16L1; APG16L; ATG16A; ATG16L; IBD10; WDR30

Antibody Information

Recommended dilutions:

WB 1:500 - 1:2000 IHC 1:50
- 1:200 IF 1:50 - 1:200

Source:

Rabbit

Isotype:

IgG

Purification:

Affinity purification

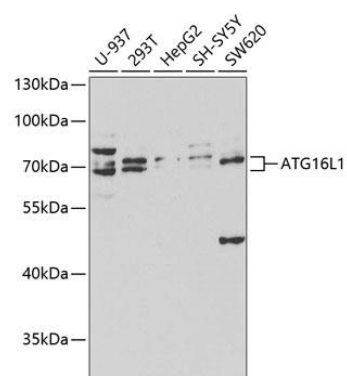
Immunogen:

Recombinant fusion protein containing a sequence corresponding to amino acids 90-300 of human ATG16L1 (NP_110430.5).

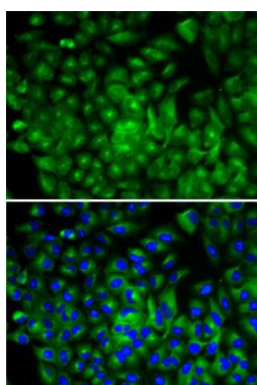
Storage:

Store at -20°C. Avoid freeze / thaw cycles. Buffer: PBS with 0.02% sodium azide, 50% glycerol, pH7.3.

Product Images



Western blot analysis of extracts of various cell lines, using ATG16L1 antibody (CAB1871) at 1:1000 dilution. Secondary antibody: HRP Goat Anti-Rabbit IgG (H+L) (CABS014) at 1:10000 dilution. Lysates/proteins: 25ug per lane. Blocking buffer: 3% nonfat dry milk in TBST.



Immunofluorescence analysis of A-549 cells using ATG16L1 antibody (CAB1871). Blue: DAPI for nuclear staining.