

SLC25A4 Rabbit Polyclonal Antibody



CAB1882

Product Information

Size:

20uL, 50uL, 100uL, 200uL

Observed MW:

33kDa

Calculated MW:

33kDa

Applications:

WB IF

Reactivity:

Human, Mouse, Rat

Antibody Information

Recommended dilutions:

WB 1:500 - 1:2000 IF 1:50 - 1:200

Source:

Rabbit

Isotype:

IgG

Purification:

Affinity purification

Protein Background

This gene is a member of the mitochondrial carrier subfamily of solute carrier protein genes. The product of this gene functions as a gated pore that translocates ADP from the cytoplasm into the mitochondrial matrix and ATP from the mitochondrial matrix into the cytoplasm. The protein forms a homodimer embedded in the inner mitochondria membrane. Mutations in this gene have been shown to result in autosomal dominant progressive external ophthalmoplegia and familial hypertrophic cardiomyopathy.

Immunogen information

Gene ID:

291

Uniprot

P12235

Synonyms:

SLC25A4; AAC1; ANT; ANT 1; ANT1; MTDPS12; MTDPS12A; PEO2; PEO3; PEOA2; T1

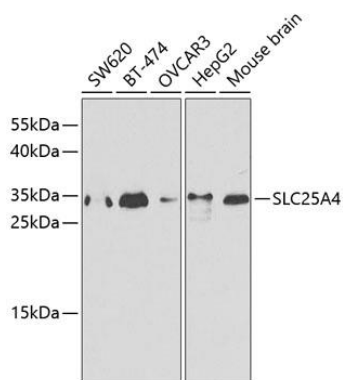
Immunogen:

Recombinant fusion protein containing a sequence corresponding to amino acids 40-298 of human SLC25A4 (NP_001142.2).

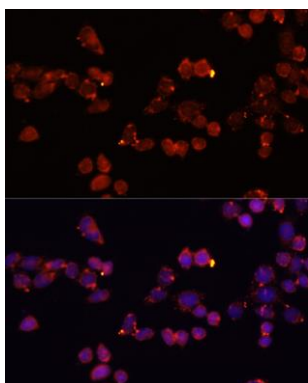
Storage:

Store at -20°C. Avoid freeze / thaw cycles. Buffer: PBS with 0.02% sodium azide, 50% glycerol, pH7.3.

Product Images



Western blot analysis of extracts of various cell lines, using SLC25A4 antibody (CAB1882). Secondary antibody: HRP Goat Anti-Rabbit IgG (H+L) (CABS014) at 1:10000 dilution. Lysates/proteins: 25ug per lane. Blocking buffer: 3% nonfat dry milk in TBST.



Immunofluorescence analysis of HeLa cells using SLC25A4 antibody (CAB1882) at dilution of 1:100 (40x lens). Blue: DAPI for nuclear staining.