

CADM1 Rabbit Polyclonal Antibody



CAB1892

Product Information

Size:

20uL, 50uL, 100uL, 200uL

Observed MW:

67kDa

Calculated MW:

36kDa/45kDa/48kDa/49kDa/
51kDa

Applications:

WB

Reactivity:

Human, Mouse

Antibody Information

Recommended dilutions:

WB 1:500 - 1:2000

Source:

Rabbit

Isotype:

IgG

Purification:

Affinity purification

Protein Background

Immunogen information

Gene ID:

23705

Uniprot

Q9BY67

Synonyms:

CADM1; BL2; IGSF4; IGSF4A; NECL2; Necl-2; RA175; ST17;
SYNCAM; TSLC1; sTSLC-1; sglIGSF; synCAM1

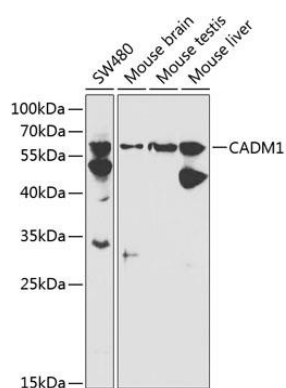
Immunogen:

Recombinant fusion protein containing a sequence corresponding to amino acids 45-344 of human CADM1 (NP_001091987.1).

Storage:

Store at -20°C. Avoid freeze / thaw cycles. Buffer: PBS with 0.02% sodium azide, 50% glycerol, pH7.3.

Product Images



Western blot analysis of extracts of various cell lines, using CADM1 antibody (CAB1892) at 1:1000 dilution. Secondary antibody: HRP Goat Anti-Rabbit IgG (H+L) (CABS014) at 1:10000 dilution. Lysates/proteins: 25ug per lane. Blocking buffer: 3% nonfat dry milk in TBST.