

CCL21 Rabbit Polyclonal Antibody



CAB1896

Product Information

Size:

20uL, 50uL, 100uL, 200uL

Observed MW:

Calculated MW:

14kDa

Applications:

IHC

Reactivity:

Human

Antibody Information

Recommended dilutions:

IHC 1:50 - 1:100

Source:

Rabbit

Isotype:

IgG

Purification:

Affinity purification

Protein Background

This antimicrobial gene is one of several CC cytokine genes clustered on the p-arm of chromosome 9. Cytokines are a family of secreted proteins involved in immunoregulatory and inflammatory processes. The CC cytokines are proteins characterized by two adjacent cysteines. Similar to other chemokines the protein encoded by this gene inhibits hemopoiesis and stimulates chemotaxis. This protein is chemotactic in vitro for thymocytes and activated T cells, but not for B cells, macrophages, or neutrophils. The cytokine encoded by this gene may also play a role in mediating homing of lymphocytes to secondary lymphoid organs. It is a high affinity functional ligand for chemokine receptor 7 that is expressed on T and B lymphocytes and a known receptor for another member of the cytokine family (small inducible cytokine A19).

Immunogen information

Gene ID:

6366

Uniprot

O00585

Synonyms:

CCL21; 6CKine; CKb9; ECL; SCYA21; SLC; TCA4

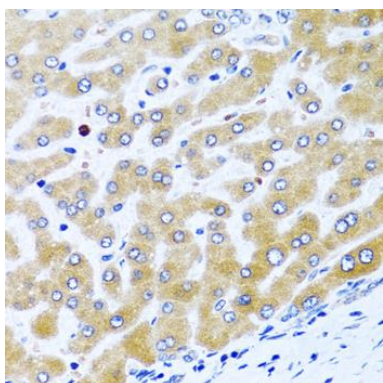
Immunogen:

Recombinant fusion protein containing a sequence corresponding to amino acids 24-134 of human CCL21 (NP_002980.1).

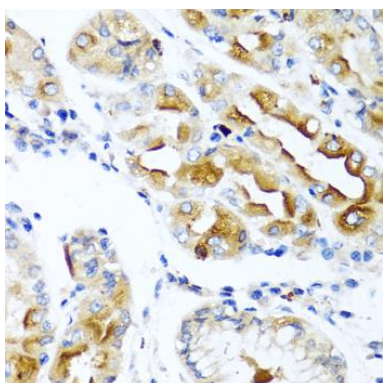
Storage:

Store at -20°C. Avoid freeze / thaw cycles. Buffer: PBS with 0.02% sodium azide, 50% glycerol, pH7.3.

Product Images



Immunohistochemistry of paraffin-embedded human liver using CCL21 antibody (CAB1896) at dilution of 1:100 (40x lens).



Immunohistochemistry of paraffin-embedded human stomach using CCL21 antibody (CAB1896) at dilution of 1:100 (40x lens).