

Caveolin-1 Rabbit Monoclonal Antibody



CAB19006

Product Information

Size:

20uL, 50uL, 100uL, 200uL

Observed MW:

23kDa

Calculated MW:

25kDa

Applications:

WB IHC

Reactivity:

Human, Mouse, Rat

Protein Background

The scaffolding protein encoded by this gene is the main component of the caveolae plasma membranes found in most cell types. The protein links integrin subunits to the tyrosine kinase FYN, an initiating step in coupling integrins to the Ras-ERK pathway and promoting cell cycle progression. The gene is a tumor suppressor gene candidate and a negative regulator of the Ras-p42/44 mitogen-activated kinase cascade. Caveolin 1 and caveolin 2 are located next to each other on chromosome 7 and express colocalizing proteins that form a stable hetero-oligomeric complex. Mutations in this gene have been associated with Berardinelli-Seip congenital lipodystrophy. Alternatively spliced transcripts encode alpha and beta isoforms of caveolin 1.[provided by RefSeq, Mar 2010]

Immunogen information

Gene ID:

857

Uniprot

Q03135

Antibody Information

Recommended dilutions:

WB 1:500 - 1:2000 IHC 1:50
- 1:200

Source:

Rabbit

Synonyms:

BSCL3; CGL3; LCCNS; MSTP085; PPH3; VIP21; CAV1

Immunogen:

A synthesized peptide derived from human Caveolin-1

Isotype:

IgG

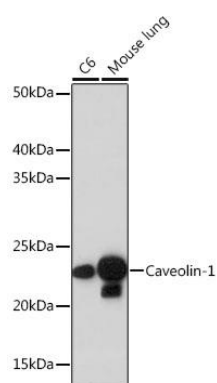
Storage:

Store at -20°C. Avoid freeze / thaw cycles. Buffer: PBS with 0.02% sodium azide, 0.05% BSA, 50% glycerol, pH7.3.

Purification:

Affinity purification

Product Images



Western blot - Caveolin-1 Rabbit mAb (CAB19006)