

# CD19 Rabbit Monoclonal Antibody



**CAB19013**

---

## Product Information

### Size:

20uL, 50uL, 100uL, 200uL

### Observed MW:

95kDa

### Calculated MW:

95kDa

### Applications:

WB IHC

### Reactivity:

Human

## Protein Background

Lymphocytes proliferate and differentiate in response to various concentrations of different antigens. The ability of the B cell to respond in a specific, yet sensitive manner to the various antigens is achieved with the use of low-affinity antigen receptors. This gene encodes a cell surface molecule which assembles with the antigen receptor of B lymphocytes in order to decrease the threshold for antigen receptor-dependent stimulation. [provided by RefSeq, Jul 2008]

## Immunogen information

### Gene ID:

930

### Uniprot

P15391

### Synonyms:

B4; CVID3; CD19

## Antibody Information

### Recommended dilutions:

WB 1:500 - 1:2000 IHC 1:50  
- 1:200

### Source:

Rabbit

### Isotype:

IgG

### Purification:

Affinity purification

### Immunogen:

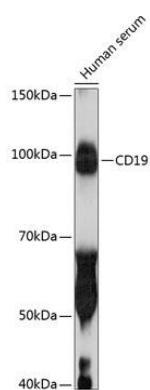
A synthesized peptide derived from human CD19

### Storage:

Store at -20°C. Avoid freeze / thaw cycles. Buffer: PBS with 0.02% sodium azide, 0.05% BSA, 50% glycerol, pH7.3.

## Product Images

---



Western blot - CD19 Rabbit mAb (CAB19013)