

CD3 epsilon Rabbit Monoclonal Antibody



CAB19017

Product Information

Size:

20uL, 50uL, 100uL, 200uL

Observed MW:

23kDa

Calculated MW:

23kDa

Applications:

WB IHC

Reactivity:

Human

Antibody Information

Recommended dilutions:

WB 1:500 - 1:2000 IHC 1:50
- 1:200

Source:

Rabbit

Isotype:

IgG

Purification:

Affinity purification

Protein Background

The protein encoded by this gene is the CD3-epsilon polypeptide, which together with CD3-gamma, -delta and -zeta, and the T-cell receptor alpha/beta and gamma/delta heterodimers, forms the T-cell receptor-CD3 complex. This complex plays an important role in coupling antigen recognition to several intracellular signal-transduction pathways. The genes encoding the epsilon, gamma and delta polypeptides are located in the same cluster on chromosome 11. The epsilon polypeptide plays an essential role in T-cell development. Defects in this gene cause immunodeficiency. This gene has also been linked to a susceptibility to type I diabetes in women. [provided by RefSeq, Jul 2008]

Immunogen information

Gene ID:

916

Uniprot

P07766

Synonyms:

CD3E; IMD18; T3E; TCRE; CD3e molecule

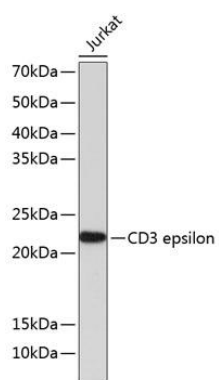
Immunogen:

A synthesized peptide derived from human CD3 epsilon

Storage:

Store at -20°C. Avoid freeze / thaw cycles. Buffer: PBS with 0.02% sodium azide, 0.05% BSA, 50% glycerol, pH7.3.

Product Images



Western blot - CD3 epsilon Rabbit mAb (CAB19017)