

# IL11 Rabbit Polyclonal Antibody



CAB1902

## Product Information

### Size:

20uL, 50uL, 100uL, 200uL

### Observed MW:

21kDa

### Calculated MW:

12kDa/21kDa

### Applications:

WB IHC IF

### Reactivity:

Human, Mouse, Rat

## Antibody Information

### Recommended dilutions:

WB 1:500 - 1:2000 IHC 1:50  
- 1:100 IF 1:50 - 1:200

### Source:

Rabbit

### Isotype:

IgG

### Purification:

Affinity purification

## Protein Background

The protein encoded by this gene is a member of the gp130 family of cytokines. These cytokines drive the assembly of multisubunit receptor complexes, all of which contain at least one molecule of the transmembrane signaling receptor IL6ST (gp130). This cytokine is shown to stimulate the T-cell-dependent development of immunoglobulin-producing B cells. It is also found to support the proliferation of hematopoietic stem cells and megakaryocyte progenitor cells. Alternatively spliced transcript variants encoding distinct isoforms have been found for this gene.

## Immunogen information

### Gene ID:

3589

### Uniprot

P20809

### Synonyms:

IL11; AGIF; IL-11

### Immunogen:

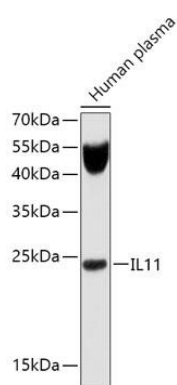
Recombinant fusion protein containing a sequence corresponding to amino acids 22-199 of human IL11 (NP\_000632.1).

### Storage:

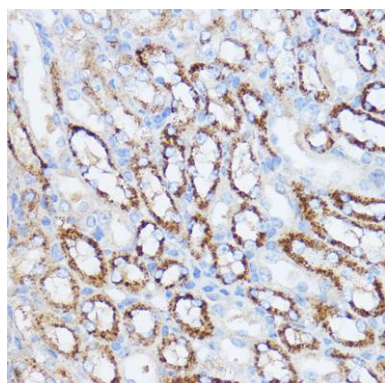
Store at -20°C. Avoid freeze / thaw cycles. Buffer: PBS with 0.02% sodium azide, 50% glycerol, pH7.3.

## Product Images

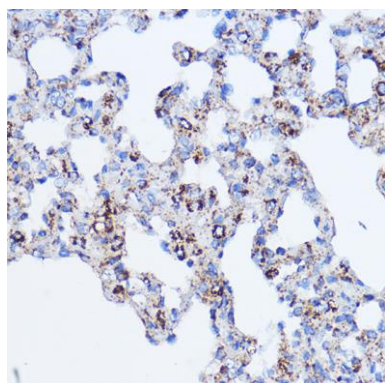
---



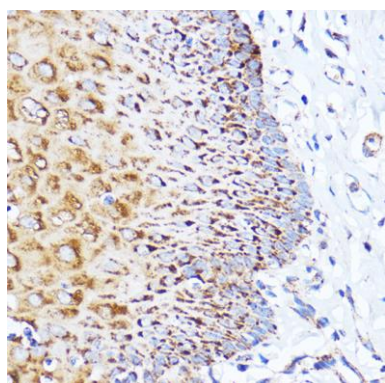
Western blot analysis of extracts of Human plasma, using IL11 antibody (CAB1902) at 1:1000 dilution. Secondary antibody: HRP Goat Anti-Rabbit IgG (H+L) (CABS014) at 1:10000 dilution. Lysates/proteins: 25ug per lane. Blocking buffer: 3% nonfat dry milk in TBST. Detection: ECL Enhanced Kit (CABM00021). Exposure time: 60s.



Immunohistochemistry of paraffin-embedded Mouse kidney using IL11 Rabbit pAb (CAB1902) at dilution of 1:100 (40x lens).



Immunohistochemistry of paraffin-embedded Rat lung using IL11 Rabbit pAb (CAB1902) at dilution of 1:100 (40x lens).



Immunohistochemistry of paraffin-embedded Human esophageal using IL11 Rabbit pAb (CAB1902) at dilution of 1:100 (40x lens).