

CD80 Rabbit Monoclonal Antibody



CAB19025

Product Information

Size:

20uL, 50uL, 100uL, 200uL

Observed MW:

50-75kDa

Calculated MW:

60kDa

Applications:

WB

Reactivity:

Human

Protein Background

The protein encoded by this gene is a membrane receptor that is activated by the binding of CD28 or CTLA-4. The activated protein induces T-cell proliferation and cytokine production. This protein can act as a receptor for adenovirus subgroup B and may play a role in lupus neuropathy. [provided by RefSeq, Aug 2011]

Immunogen information

Gene ID:

941

Uniprot

P33681

Synonyms:

B7; B7-1; B7.1; BB1; CD28LG; CD28LG1; LAB7; CD80

Antibody Information

Recommended dilutions:

WB 1:500 - 1:2000

Source:

Rabbit

Isotype:

IgG

Purification:

Affinity purification

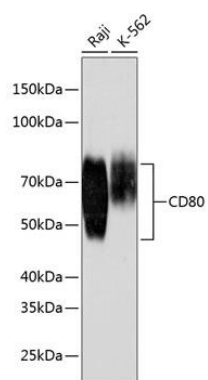
Immunogen:

A synthesized peptide derived from human CD80

Storage:

Store at -20°C. Avoid freeze / thaw cycles. Buffer: PBS with 0.02% sodium azide, 0.05% BSA, 50% glycerol, pH7.3.

Product Images



Western blot - CD80 Rabbit mAb (CAB19025)