

# Cullin 1 Rabbit Monoclonal Antibody



**CAB19034**

---

## Product Information

### Size:

20uL, 50uL, 100uL, 200uL

### Observed MW:

90kDa

### Calculated MW:

90kDa

### Applications:

WB

### Reactivity:

Human, Mouse, Rat

## Antibody Information

### Recommended dilutions:

WB 1:500 - 1:2000

### Source:

Rabbit

### Isotype:

IgG

### Purification:

Affinity purification

## Protein Background

### Immunogen information

#### Gene ID:

8454

#### Uniprot

Q13616

#### Synonyms:

Cullin 1; CUL1; cullin-1; MGC149834; MGC149835

#### Immunogen:

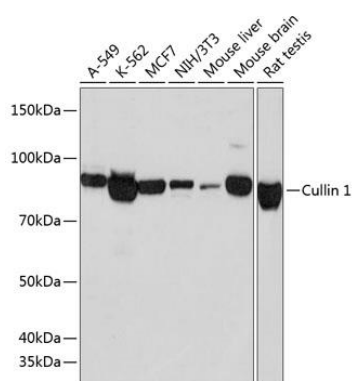
A synthesized peptide derived from human Cullin 1

#### Storage:

Store at -20°C. Avoid freeze / thaw cycles. Buffer: PBS with 0.02% sodium azide, 0.05% BSA, 50% glycerol, pH7.3.

## Product Images

---



Western blot - Cullin 1 Rabbit mAb (CAB19034)