

[KO Validated] Cyclin D1 Rabbit Monoclonal Antibody

CAB19038



Product Information

Size:

20uL, 50uL, 100uL, 200uL

Observed MW:

34kDa

Calculated MW:

34kDa

Applications:

WB IHC IF

Reactivity:

Human, Mouse, Rat

Antibody Information

Recommended dilutions:

WB 1:500 - 1:2000 IHC 1:50
- 1:200 IF 1:50 - 1:200

Source:

Rabbit

Isotype:

IgG

Purification:

Affinity purification

Protein Background

The protein encoded by this gene belongs to the highly conserved cyclin family, whose members are characterized by a dramatic periodicity in protein abundance throughout the cell cycle. Cyclins function as regulators of CDK kinases. Different cyclins exhibit distinct expression and degradation patterns which contribute to the temporal coordination of each mitotic event. This cyclin forms a complex with and functions as a regulatory subunit of CDK4 or CDK6, whose activity is required for cell cycle G1/S transition. This protein has been shown to interact with tumor suppressor protein Rb and the expression of this gene is regulated positively by Rb. Mutations, amplification and overexpression of this gene, which alters cell cycle progression, are observed frequently in a variety of tumors and may contribute to tumorigenesis. [provided by RefSeq, Jul 2008]

Immunogen information

Gene ID:

595

Uniprot

P24385

Synonyms:

BCL1; D11S287E; PRAD1; U21B31; CCND1; Cyclin D1; cyclin D1

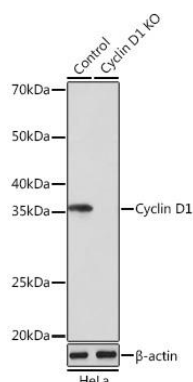
Immunogen:

A synthesized peptide derived from human Cyclin D1

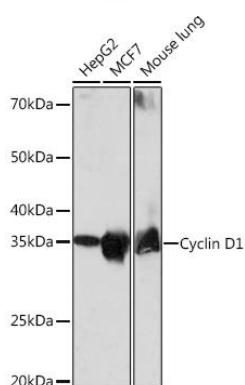
Storage:

Store at -20°C. Avoid freeze / thaw cycles. Buffer: PBS with 0.02% sodium azide, 0.05% BSA, 50% glycerol, pH7.3.

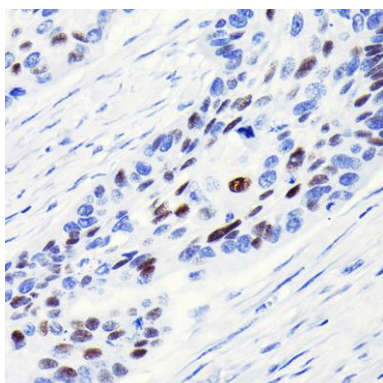
Product Images



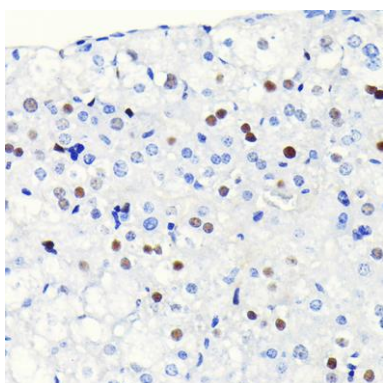
Western blot analysis of extracts from normal (control) and Cyclin D1 knockout (KO) HeLa cells, using Cyclin D1 antibody (CAB19038) at 1:1000 dilution. Secondary antibody: HRP Goat Anti-Rabbit IgG (H+L) (CABS014) at 1:10000 dilution. Lysates/proteins: 25ug per lane. Blocking buffer: 3% nonfat dry milk in TBST. Detection: ECL Basic Kit (CABM00020). Exposure time: 1min.



Western blot analysis of extracts of various cell lines, using Cyclin D1 antibody (CAB19038) at 1:1000 dilution. Secondary antibody: HRP Goat Anti-Rabbit IgG (H+L) (CABS014) at 1:10000 dilution. Lysates/proteins: 25ug per lane. Blocking buffer: 3% nonfat dry milk in TBST. Detection: ECL Basic Kit (CABM00020). Exposure time: 1min.



Immunohistochemistry of paraffin-embedded human esophageal cancer using Cyclin D1 Rabbit mAb (CAB19038) at dilution of 1:100 (40x lens).



Immunohistochemistry of paraffin-embedded mouse liver using Cyclin D1 Rabbit mAb (CAB19038) at dilution of 1:100 (40x lens).