

[KO Validated] FSCN1 Rabbit Polyclonal Antibody



CAB1904

Product Information

Size:

20uL, 50uL, 100uL, 200uL

Observed MW:

50kDa, 55kDa

Calculated MW:

54kDa

Applications:

WB IHC IF

Reactivity:

Human, Mouse, Rat

Antibody Information

Recommended dilutions:

WB 1:500 - 1:2000 IHC 1:50
- 1:200 IF 1:50 - 1:200

Source:

Rabbit

Isotype:

IgG

Purification:

Affinity purification

Protein Background

This gene encodes a member of the fascin family of actin-binding proteins. Fascin proteins organize F-actin into parallel bundles, and are required for the formation of actin-based cellular protrusions. The encoded protein plays a critical role in cell migration, motility, adhesion and cellular interactions. Expression of this gene is known to be regulated by several microRNAs, and overexpression of this gene may play a role in the metastasis of multiple types of cancer by increasing cell motility. Expression of this gene is also a marker for Reed-Sternberg cells in Hodgkin's lymphoma. A pseudogene of this gene is located on the long arm of chromosome 15.

Immunogen information

Gene ID:

6624

Uniprot

Q16658

Synonyms:

FSCN1; FAN1; HSN; SNL; p55; fascin

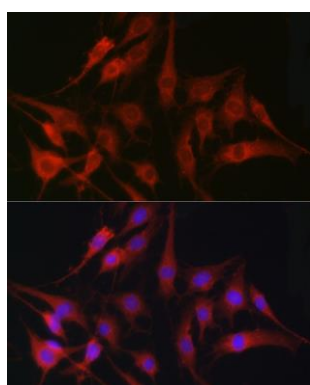
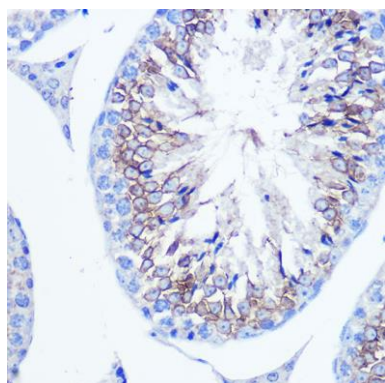
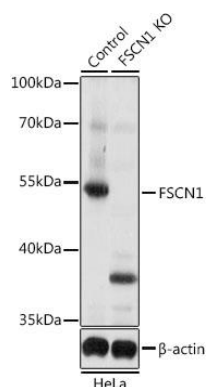
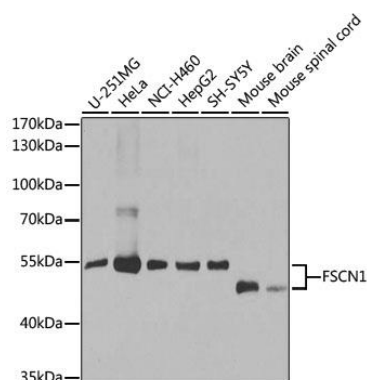
Immunogen:

Recombinant fusion protein containing a sequence corresponding to amino acids 394-493 of human FSCN1 (NP_003079.1).

Storage:

Store at -20°C. Avoid freeze / thaw cycles. Buffer: PBS with 0.02% sodium azide, 50% glycerol, pH7.3.

Product Images



Western blot analysis of extracts of various cell lines, using FSCN1 antibody (CAB1904) at 1:1000 dilution. Secondary antibody: HRP Goat Anti-Rabbit IgG (H+L) (CABS014) at 1:10000 dilution. Lysates/proteins: 25ug per lane. Blocking buffer: 3% nonfat dry milk in TBST. Detection: ECL Basic Kit (CABM00020). Exposure time: 30s.

Western blot analysis of extracts from normal (control) and FSCN1 knockout (KO) HeLa cells, using FSCN1 antibody (CAB1904) at 1:1000 dilution. Secondary antibody: HRP Goat Anti-Rabbit IgG (H+L) (CABS014) at 1:10000 dilution. Lysates/proteins: 25ug per lane. Blocking buffer: 3% nonfat dry milk in TBST. Detection: ECL Basic Kit (CABM00020). Exposure time: 5s.

Immunohistochemistry of paraffin-embedded mouse testis using [KO Validated] FSCN1 Rabbit pAb (CAB1904) at dilution of 1:100 (40x lens).

Immunofluorescence analysis of C6 cells using [KO Validated] FSCN1 Rabbit pAb (CAB1904) at dilution of 1:100 (40x lens). Blue: DAPI for nuclear staining.