

# ErbB4 Rabbit Monoclonal Antibody



CAB19047

## Product Information

### Size:

20uL, 50uL, 100uL, 200uL

### Observed MW:

160kDa

### Calculated MW:

160kDa

### Applications:

WB

### Reactivity:

Mouse

## Antibody Information

### Recommended dilutions:

WB 1:500 - 1:2000

### Source:

Rabbit

### Isotype:

IgG

### Purification:

Affinity purification

## Protein Background

This gene is a member of the Tyr protein kinase family and the epidermal growth factor receptor subfamily. It encodes a single-pass type I membrane protein with multiple cysteine rich domains, a transmembrane domain, a tyrosine kinase domain, a phosphotyrosine-3 kinase binding site and a PDZ domain binding motif. The protein binds to and is activated by neuregulins and other factors and induces a variety of cellular responses including mitogenesis and differentiation. Multiple proteolytic events allow for the release of a cytoplasmic fragment and an extracellular fragment. Mutations in this gene have been associated with cancer. Alternatively spliced variants which encode different protein isoforms have been described; however, not all variants have been fully characterized. [provided by RefSeq, Jul 2008]

## Immunogen information

### Gene ID:

2066

### Uniprot

Q15303

### Synonyms:

ALS19; HER4; p180erbB4; ERBB4; HER4/ErbB4

### Immunogen:

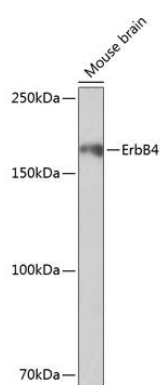
A synthesized peptide derived from human ErbB4

### Storage:

Store at -20°C. Avoid freeze / thaw cycles. Buffer: PBS with 0.02% sodium azide, 0.05% BSA, 50% glycerol, pH7.3.

## Product Images

---



Western blot - ErbB4 Rabbit mAb (CAB19047)