

# RUVBL2 Rabbit Polyclonal Antibody



CAB1905

## Product Information

### Size:

20uL, 50uL, 100uL, 200uL

### Observed MW:

50kDa

### Calculated MW:

46kDa/51kDa

### Applications:

WB IHC IF IP

### Reactivity:

Human, Mouse, Rat

## Antibody Information

### Recommended dilutions:

WB 1:500 - 1:2000 IHC 1:50  
- 1:200 IF 1:50 - 1:200 IP  
1:50 - 1:100

### Source:

Rabbit

### Isotype:

IgG

### Purification:

Affinity purification

## Protein Background

This gene encodes the second human homologue of the bacterial RuvB gene. Bacterial RuvB protein is a DNA helicase essential for homologous recombination and DNA double-strand break repair. Functional analysis showed that this gene product has both ATPase and DNA helicase activities. This gene is physically linked to the CGB/LHB gene cluster on chromosome 19q13.3, and is very close (55 nt) to the LHB gene, in the opposite orientation.

## Immunogen information

### Gene ID:

10856

### Uniprot

Q9Y230

### Synonyms:

RUVBL2; CGI-46; ECP-51; ECP51; INO80J; REPTIN; RVB2; TAP54-beta; TIH2; TIP48; TIP49B

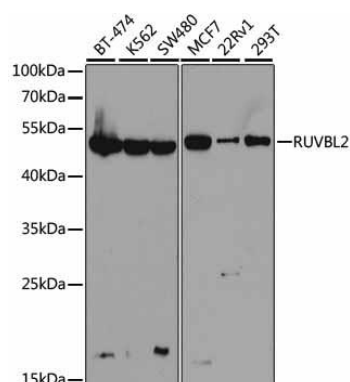
### Immunogen:

Recombinant fusion protein containing a sequence corresponding to amino acids 1-463 of human RUVBL2 (NP\_006657.1).

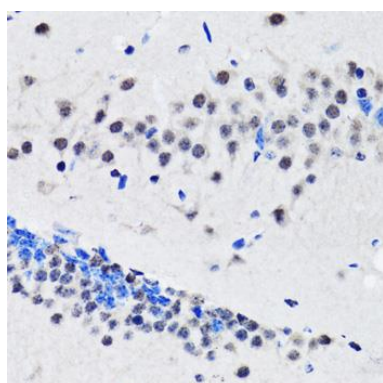
### Storage:

Store at -20°C. Avoid freeze / thaw cycles. Buffer: PBS with 0.02% sodium azide, 50% glycerol, pH7.3.

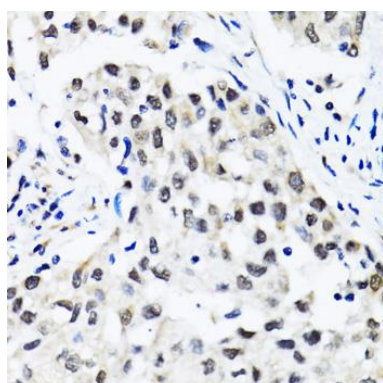
## Product Images



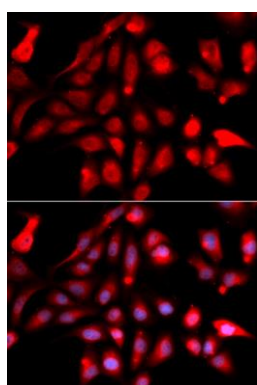
Western blot analysis of extracts of various cell lines, using RUVBL2 antibody (CAB1905) at 1:1000 dilution. Secondary antibody: HRP Goat Anti-Rabbit IgG (H+L) (CABS014) at 1:10000 dilution. Lysates/proteins: 25ug per lane. Blocking buffer: 3% nonfat dry milk in TBST. Detection: ECL Basic Kit (CABM00020). Exposure time: 90s.



Immunohistochemistry of paraffin-embedded rat brain using RUVBL2 antibody (CAB1905) at dilution of 1:100 (40x lens).



Immunohistochemistry of paraffin-embedded human lung cancer using RUVBL2 antibody (CAB1905) at dilution of 1:100 (40x lens).



Immunofluorescence analysis of U2OS cells using RUVBL2 antibody (CAB1905). Blue: DAPI for nuclear staining.