

# Heme Oxygenase 1 Rabbit Monoclonal Antibody



CAB19062

## Product Information

### Size:

20uL, 50uL, 100uL, 200uL

### Observed MW:

33kDa

### Calculated MW:

33kDa

### Applications:

WB IHC

### Reactivity:

Human, Mouse, Rat

## Protein Background

Heme oxygenase, an essential enzyme in heme catabolism, cleaves heme to form biliverdin, which is subsequently converted to bilirubin by biliverdin reductase, and carbon monoxide, a putative neurotransmitter. Heme oxygenase activity is induced by its substrate heme and by various nonheme substances. Heme oxygenase occurs as 2 isozymes, an inducible heme oxygenase-1 and a constitutive heme oxygenase-2. HMOX1 and HMOX2 belong to the heme oxygenase family. [provided by RefSeq, Jul 2008]

## Immunogen information

### Gene ID:

3162

### Uniprot

P09601

### Synonyms:

HMOX1; HMOX1D; HO-1; HSP32; bK286B10

## Antibody Information

### Recommended dilutions:

WB 1:500 - 1:2000 IHC 1:50 - 1:200

### Source:

Rabbit

### Isotype:

IgG

### Purification:

Affinity purification

### Immunogen:

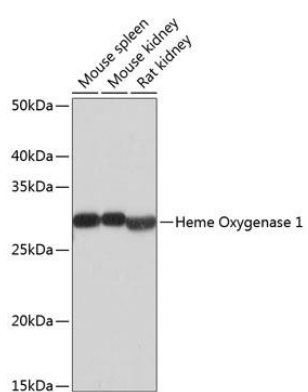
A synthesized peptide derived from human Heme Oxygenase 1

### Storage:

Store at -20°C. Avoid freeze / thaw cycles. Buffer: PBS with 0.02% sodium azide, 0.05% BSA, 50% glycerol, pH7.3.

## Product Images

---



Western blot - Heme Oxygenase 1 Rabbit mAb (CAB19062)