

Integrin alpha 5 Rabbit Monoclonal Antibody



CAB19069

Product Information

Size:

20uL, 50uL, 100uL, 200uL

Observed MW:

17kDa/150kDa

Calculated MW:

150kDa

Applications:

WB, IHC

Reactivity:

Human, Mouse, Rat

Category:

Monoclonal Antibodies

Protein Background

The product of this gene belongs to the integrin alpha chain family. Integrins are heterodimeric integral membrane proteins composed of an alpha subunit and a beta subunit that function in cell surface adhesion and signalling. The encoded preproprotein is proteolytically processed to generate light and heavy chains that comprise the alpha 5 subunit. This subunit associates with the beta 1 subunit to form a fibronectin receptor. This integrin may promote tumour invasion, and higher expression of this gene may be correlated with shorter survival time in lung cancer patients. Note that the integrin alpha 5 and integrin alpha V subunits are encoded by distinct genes. [provided by RefSeq, Oct 2015]

Immunogen information

Gene ID:

3678

Uniprot

P08648

Synonyms:

CD49e; FNRA; VLA-5; VLA5A; Integrin alpha 5; ITGA5

Antibody Information

Recommended dilutions:

WB 1:500 - 1:2000

IHC 1:50 - 1:200

Source:

Rabbit

Isotype:

IgG

Purification:

Affinity purification

Immunogen:

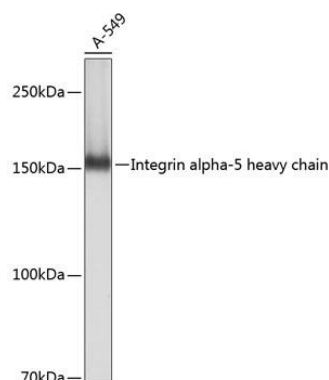
A synthesized peptide derived from human Integrin alpha 5

Storage:

Store at -20°C. Avoid freeze / thaw cycles.

Buffer: PBS with 0.02% sodium azide, 0.05% BSA, 50% glycerol, pH7.3.

Product Images



Western blot analysis of extracts of A-549 cells, using Integrin alpha 5 (ITGA5/CD49e) antibody (CAB19069) at 1:1000 dilution.

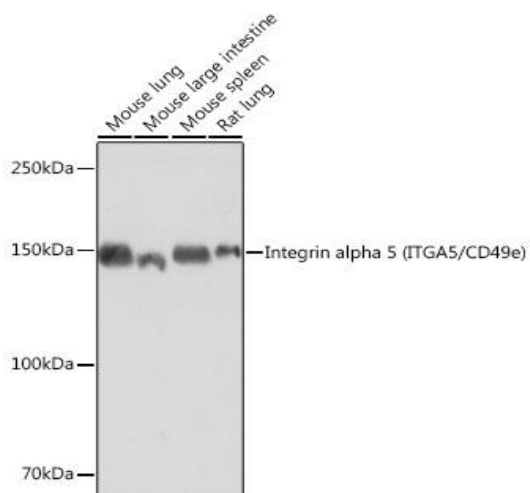
Secondary antibody: HRP Goat Anti-Rabbit IgG (H+L) (AS014) at 1:10000 dilution.

Lysates/proteins: 25ug per lane.

Blocking buffer: 3% non-fat dry milk in TBST.

Detection: ECL Basic Kit (AbGn00020).

Exposure time: 1s.



Western blot analysis of extracts of various cell lines, using Integrin alpha 5 (ITGA5/CD49e) antibody (CAB19069) at 1:1000 dilution.

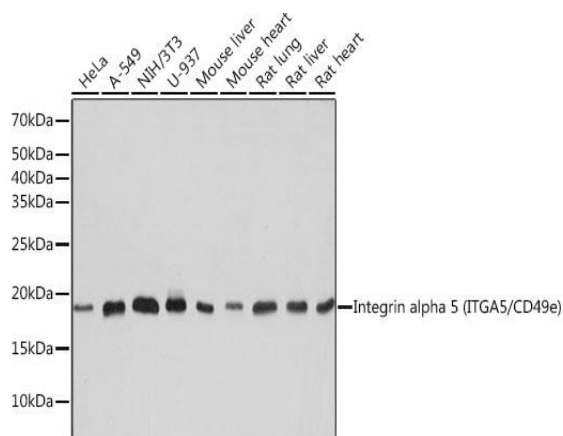
Secondary antibody: HRP Goat Anti-Rabbit IgG (H+L) (AS014) at 1:10000 dilution.

Lysates/proteins: 25ug per lane.

Blocking buffer: 3% non-fat dry milk in TBST.

Detection: ECL Basic Kit (AbGn00020).

Exposure time: 10s.



Western blot analysis of extracts of various cell lines, using Integrin alpha 5 (ITGA5/CD49e) antibody (CAB19069) at 1:1000 dilution.

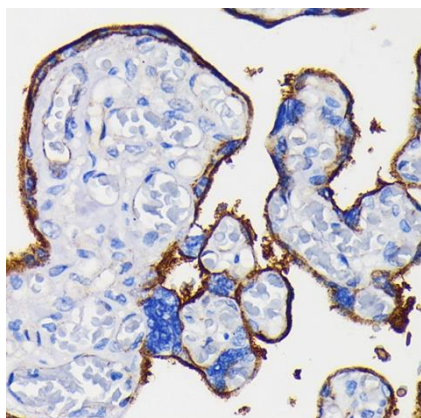
Secondary antibody: HRP Goat Anti-Rabbit IgG (H+L) (AS014) at 1:10000 dilution.

Lysates/proteins: 25ug per lane.

Blocking buffer: 3% non-fat dry milk in TBST.

Detection: ECL Basic Kit (AbGn00020).

Exposure time: 1s.



Immunohistochemistry of paraffin-embedded human placenta using Integrin alpha 5 (ITGA5/CD49e) Rabbit mAb (CAB19069) at dilution of 1:100 (40x lens).