

FHL2 Rabbit Polyclonal Antibody



CAB1907

Product Information

Size:

20uL, 50uL, 100uL, 200uL

Observed MW:

32kDa

Calculated MW:

15kDa/32kDa

Applications:

WB IHC

Reactivity:

Human, Mouse, Rat

Antibody Information

Recommended dilutions:

WB 1:500 - 1:2000 IHC 1:50
- 1:200

Source:

Rabbit

Isotype:

IgG

Purification:

Affinity purification

Protein Background

This gene encodes a member of the four-and-a-half-LIM-only protein family. Family members contain two highly conserved, tandemly arranged, zinc finger domains with four highly conserved cysteines binding a zinc atom in each zinc finger. This protein is thought to have a role in the assembly of extracellular membranes. Also, this gene is down-regulated during transformation of normal myoblasts to rhabdomyosarcoma cells and the encoded protein may function as a link between presenilin-2 and an intracellular signaling pathway. Multiple alternatively spliced variants encoding different isoforms have been identified.

Immunogen information

Gene ID:

2274

Uniprot

Q14192

Synonyms:

FHL2; AAG11; DRAL; FHL-2; SLIM-3; SLIM3

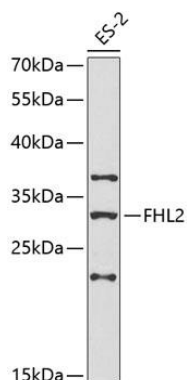
Immunogen:

Recombinant fusion protein containing a sequence corresponding to amino acids 1-279 of human FHL2 (NP_001034581.1).

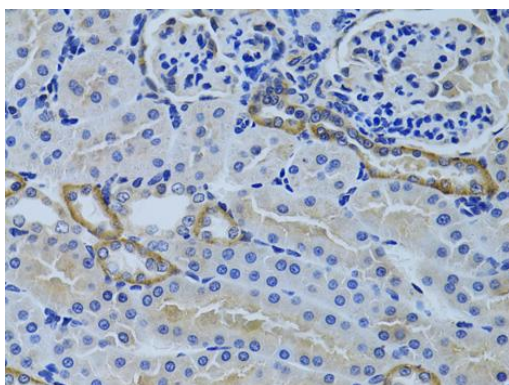
Storage:

Store at -20°C. Avoid freeze / thaw cycles. Buffer: PBS with 0.02% sodium azide, 50% glycerol, pH7.3.

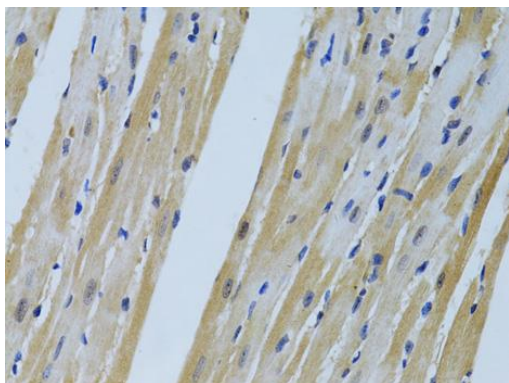
Product Images



Western blot analysis of extracts of ES-2 cells, using FHL2 antibody (CAB1907) at 1:1000 dilution. Secondary antibody: HRP Goat Anti-Rabbit IgG (H+L) (CABS014) at 1:10000 dilution. Lysates/proteins: 25ug per lane. Blocking buffer: 3% nonfat dry milk in TBST. Detection: ECL Enhanced Kit (CABM00021).



Immunohistochemistry of paraffin-embedded rat kidney using FHL2 antibody (CAB1907) at dilution of 1:100 (40x lens).



Immunohistochemistry of paraffin-embedded mouse heart using FHL2 antibody (CAB1907) at dilution of 1:100 (40x lens).