

# Integrin beta-1/CD29 Rabbit Monoclonal Antibody

## CAB19072



### Product Information

**Size:**

20uL, 50uL, 100uL, 200uL

**Observed MW:**

135kDa

**Calculated MW:**

150kDa

**Applications:**

WB

**Reactivity:**

Human, Mouse, Rat

### Antibody Information

**Recommended dilutions:**

WB 1:500 - 1:2000

**Source:**

Rabbit

**Isotype:**

IgG

**Purification:**

Affinity purification

### Protein Background

Integrins are heterodimeric proteins made up of alpha and beta subunits. At least 18 alpha and 8 beta subunits have been described in mammals. Integrin family members are membrane receptors involved in cell adhesion and recognition in a variety of processes including embryogenesis, hemostasis, tissue repair, immune response and metastatic diffusion of tumor cells. This gene encodes a beta subunit. Multiple alternatively spliced transcript variants which encode different protein isoforms have been found for this gene. [provided by RefSeq, Jul 2008]

### Immunogen information

**Gene ID:**

3688

**Uniprot**

P05556

**Synonyms:**

CD29; FNRB; GPIIA; MDF2; MSK12; VLA-BETA; VLAB; Integrin beta 1; ITGB1; Integrin Beta 1

**Immunogen:**

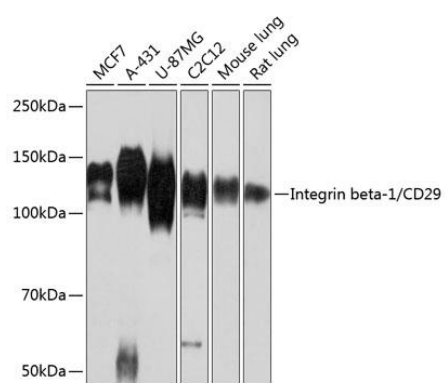
A synthesized peptide derived from human Integrin beta 1

**Storage:**

Store at -20°C. Avoid freeze / thaw cycles. Buffer: PBS with 0.02% sodium azide, 0.05% BSA, 50% glycerol, pH7.3.

## Product Images

---



Western blot - Integrin beta-1/CD29 Rabbit mAb (CAB19072)