

Integrin beta 3 Rabbit Monoclonal Antibody



CAB19073

Product Information

Size:

20uL, 50uL, 100uL, 200uL

Observed MW:

110kDa

Calculated MW:

110kDa

Applications:

WB IHC

Reactivity:

Human, Mouse, Rat

Protein Background

The ITGB3 protein product is the integrin beta chain beta 3. Integrins are integral cell-surface proteins composed of an alpha chain and a beta chain. A given chain may combine with multiple partners resulting in different integrins. Integrin beta 3 is found along with the alpha IIb chain in platelets. Integrins are known to participate in cell adhesion as well as cell-surface mediated signalling. [provided by RefSeq, Jul 2008]

Immunogen information

Gene ID:

3690

Uniprot

P05106

Synonyms:

BDPLT16; BDPLT2; CD61; GP3A; GPIIIa; GT; Integrin beta 3; ITGB3

Antibody Information

Recommended dilutions:

WB 1:500 - 1:2000 IHC 1:50
- 1:200

Source:

Rabbit

Isotype:

IgG

Purification:

Affinity purification

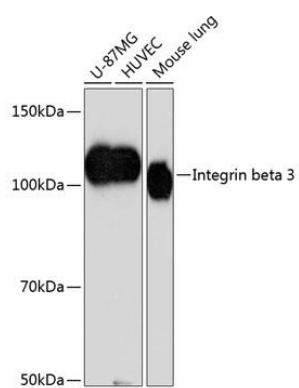
Immunogen:

A synthesized peptide derived from human Integrin beta 3

Storage:

Store at -20°C. Avoid freeze / thaw cycles. Buffer: PBS with 0.02% sodium azide, 0.05% BSA, 50% glycerol, pH7.3.

Product Images



Western blot - Integrin beta 3 Rabbit mAb (CAB19073)