

# PGP9.5 Rabbit Monoclonal Antibody



CAB19101

## Product Information

### Size:

20uL, 50uL, 100uL, 200uL

### Observed MW:

27kDa

### Calculated MW:

25kDa

### Applications:

WB IHC IF

### Reactivity:

Human, Mouse, Rat

## Antibody Information

### Recommended dilutions:

WB 1:500 - 1:2000 IHC 1:50  
- 1:200 IF 1:50 - 1:200

### Source:

Rabbit

### Isotype:

IgG

### Purification:

Affinity purification

## Protein Background

The protein encoded by this gene belongs to the peptidase C12 family. This enzyme is a thiol protease that hydrolyzes a peptide bond at the C-terminal glycine of ubiquitin. This gene is specifically expressed in the neurons and in cells of the diffuse neuroendocrine system. Mutations in this gene may be associated with Parkinson disease.[provided by RefSeq, Sep 2009]

## Immunogen information

### Gene ID:

7345

### Uniprot

P09936

### Synonyms:

HEL-117; HEL-S-53; NDGOA; PARK5; PGP 9.5; PGP9.5; PGP95;  
SPG79; Uch-L1; UCHL1

### Immunogen:

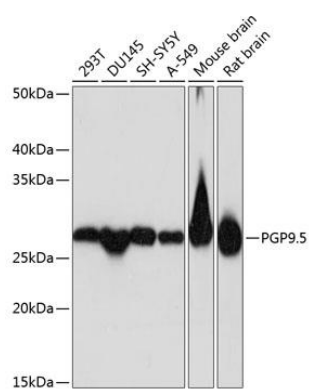
A synthesized peptide derived from human PGP9.5

### Storage:

Store at -20°C. Avoid freeze / thaw cycles. Buffer: PBS with 0.02% sodium azide, 0.05% BSA, 50% glycerol, pH7.3.

## Product Images

---



Western blot - PGP9.5 Rabbit mAb (CAB19101)