

# Serotonin transporter Rabbit Monoclonal Antibody

## CAB19110



### Product Information

**Size:**

20uL, 50uL, 100uL, 200uL

**Observed MW:**

70kDa

**Calculated MW:**

70kDa

**Applications:**

WB IF

**Reactivity:**

Human, Rat

### Antibody Information

**Recommended dilutions:**

WB 1:500 - 1:2000 IF 1:50 - 1:200

**Source:**

Rabbit

**Isotype:**

IgG

**Purification:**

Affinity purification

### Protein Background

This gene encodes an integral membrane protein that transports the neurotransmitter serotonin from synaptic spaces into presynaptic neurons. The encoded protein terminates the action of serotonin and recycles it in a sodium-dependent manner. This protein is a target of psychomotor stimulants, such as amphetamines and cocaine, and is a member of the sodium:neurotransmitter symporter family. A repeat length polymorphism in the promoter of this gene has been shown to affect the rate of serotonin uptake and may play a role in sudden infant death syndrome, aggressive behavior in Alzheimer disease patients, and depression-susceptibility in people experiencing emotional trauma. [provided by RefSeq, Jul 2008]

### Immunogen information

**Gene ID:**

6532

**Uniprot**

P31645

**Synonyms:**

5-HTT; 5-HTTLPR; 5HTT; HTT; OCD1; SERT; SERT1; hSERT; SLC6A4

**Immunogen:**

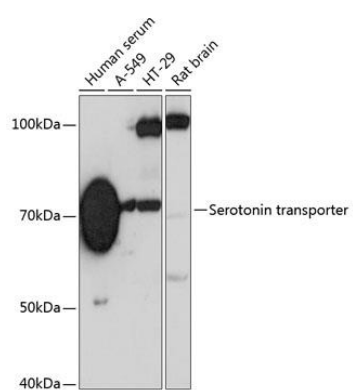
A synthesized peptide derived from human Serotonin transporter

**Storage:**

Store at -20°C. Avoid freeze / thaw cycles. Buffer: PBS with 0.02% sodium azide, 0.05% BSA, 50% glycerol, pH7.3.

## Product Images

---



Western blot - Serotonin transporter Rabbit mAb (CAB19110)