

[KO Validated] Smad3 Rabbit Monoclonal Antibody

CAB19115



Product Information

Size:

20uL, 50uL, 100uL, 200uL

Observed MW:

58kDa

Calculated MW:

58kDa

Applications:

WB IHC

Reactivity:

Human, Mouse, Rat

Protein Background

The protein encoded by this gene belongs to the SMAD, a family of proteins similar to the gene products of the Drosophila gene 'mothers against decapentaplegic' (Mad) and the C. elegans gene Sma. SMAD proteins are signal transducers and transcriptional modulators that mediate multiple signaling pathways. This protein functions as a transcriptional modulator activated by transforming growth factor-beta and is thought to play a role in the regulation of carcinogenesis. [provided by RefSeq, Apr 2009]

Immunogen information

Gene ID:

4088

Uniprot

P84022

Synonyms:

HSPC193; HsT17436; JV15-2; LDS1C; LDS3; MADH3; SMAD3

Antibody Information

Recommended dilutions:

WB 1:500 - 1:2000 IHC 1:50 - 1:200

Source:

Rabbit

Isotype:

IgG

Purification:

Affinity purification

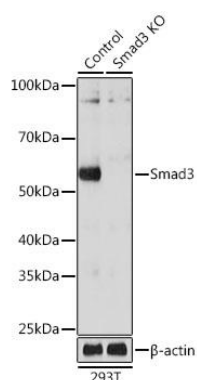
Immunogen:

A synthesized peptide derived from human Smad3

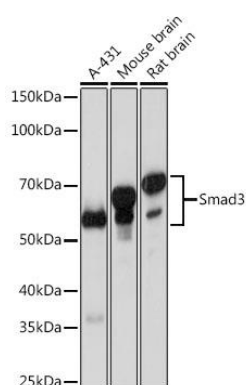
Storage:

Store at -20°C. Avoid freeze / thaw cycles. Buffer: PBS with 0.02% sodium azide, 0.05% BSA, 50% glycerol, pH7.3.

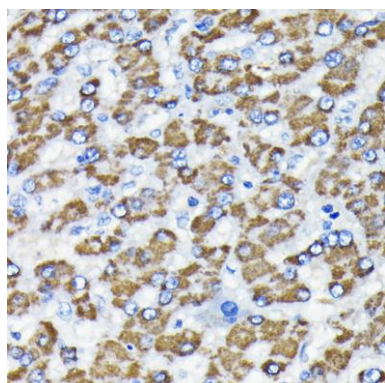
Product Images



Western blot analysis of extracts from normal (control) and Smad3 knockout (KO) 293T cells, using Smad3 antibody (CAB19115) at 1:1000 dilution. Secondary antibody: HRP Goat Anti-Rabbit IgG (H+L) (CABS014) at 1:10000 dilution. Lysates/proteins: 25ug per lane. Blocking buffer: 3% nonfat dry milk in TBST. Detection: ECL Basic Kit (CABM00020). Exposure time: 10s.



Western blot analysis of extracts of various cell lines, using Smad3 antibody (CAB19115) at 1:1000 dilution. Secondary antibody: HRP Goat Anti-Rabbit IgG (H+L) (CABS014) at 1:10000 dilution. Lysates/proteins: 25ug per lane. Blocking buffer: 3% nonfat dry milk in TBST. Detection: ECL Basic Kit (CABM00020). Exposure time: 10s.



Immunohistochemistry of paraffin-embedded human liver using Smad3 Rabbit mAb (CAB19115) at dilution of 1:100 (40x lens).