

PPP2R4 Rabbit Polyclonal Antibody



CAB1912

Product Information

Size:

20uL, 50uL, 100uL, 200uL

Observed MW:

Calculated MW:

31kDa/33kDa/36kDa/40kDa

Applications:

IHC IF

Reactivity:

Human, Mouse

Antibody Information

Recommended dilutions:

IHC 1:50 - 1:200 IF 1:50 - 1:200

Source:

Rabbit

Isotype:

IgG

Purification:

Affinity purification

Protein Background

Protein phosphatase 2A is one of the four major Ser/Thr phosphatases and is implicated in the negative control of cell growth and division. Protein phosphatase 2A holoenzymes are heterotrimeric proteins composed of a structural subunit A, a catalytic subunit C, and a regulatory subunit B. The regulatory subunit is encoded by a diverse set of genes that have been grouped into the B/PR55, B'/PR61, and B''/PR72 families. These different regulatory subunits confer distinct enzymatic specificities and intracellular localizations to the holoenzyme. The product of this gene belongs to the B' family. This gene encodes a specific phosphotyrosyl phosphatase activator of the dimeric form of protein phosphatase 2A. Alternative splicing results in multiple transcript variants encoding different isoforms.

Immunogen information

Gene ID:

5524

Uniprot

Q15257

Synonyms:

PTPA; PP2A; PPP2R4; PR53

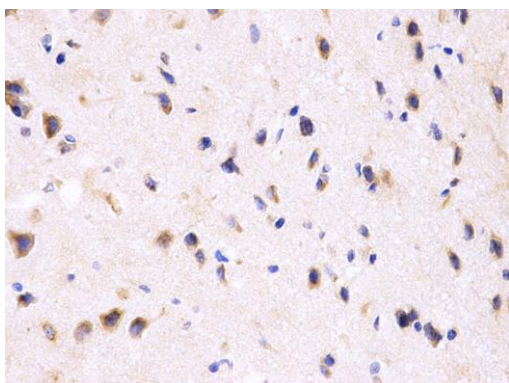
Immunogen:

Recombinant fusion protein containing a sequence corresponding to amino acids 1-323 of human PPP2R4 (NP_821067.1).

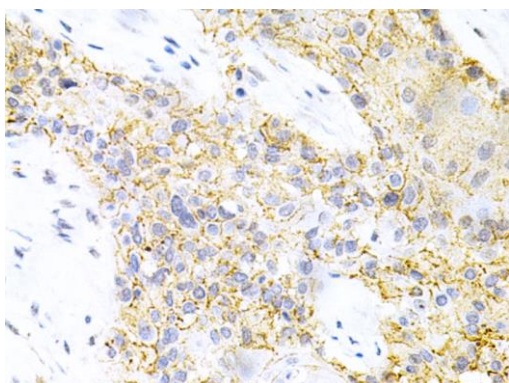
Storage:

Store at -20°C. Avoid freeze / thaw cycles. Buffer: PBS with 0.02% sodium azide, 50% glycerol, pH7.3.

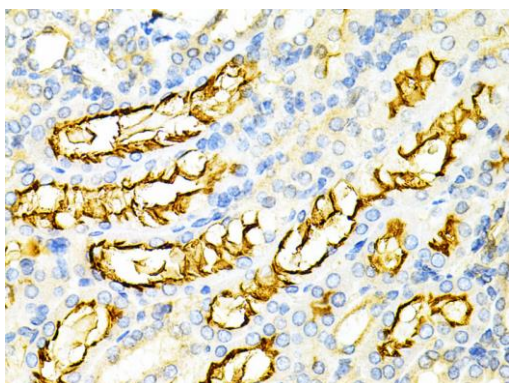
Product Images



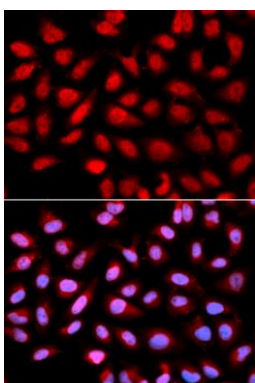
Immunohistochemistry of paraffin-embedded rat brain using PPP2R4 Antibody (CAB1912) at dilution of 1:200 (40x lens).



Immunohistochemistry of paraffin-embedded human esophageal cancer using PPP2R4 Antibody (CAB1912) at dilution of 1:200 (40x lens).



Immunohistochemistry of paraffin-embedded mouse kidney using PPP2R4 Antibody (CAB1912) at dilution of 1:200 (40x lens).



Immunofluorescence analysis of U2OS cells using PPP2R4 antibody (CAB1912). Blue: DAPI for nuclear staining.