

# Synaptophysin Rabbit Monoclonal Antibody



CAB19122

---

## Product Information

### Size:

20uL, 50uL, 100uL, 200uL

### Observed MW:

38kDa

### Calculated MW:

38kDa

### Applications:

WB IF

### Reactivity:

Mouse, Rat

## Protein Background

This gene encodes an integral membrane protein of small synaptic vesicles in brain and endocrine cells. The protein also binds cholesterol and is thought to direct targeting of vesicle-associated membrane protein 2 (synaptobrevin) to intracellular compartments. Mutations in this gene are associated with X-linked mental retardation (XLMR). [provided by RefSeq, Aug 2011]

## Immunogen information

### Gene ID:

6855

### Uniprot

P08247

### Synonyms:

MRX96; MRXSYP; SYP

## Antibody Information

### Recommended dilutions:

WB 1:500 - 1:2000 IF 1:50 - 1:200

### Source:

Rabbit

### Isotype:

IgG

### Purification:

Affinity purification

### Immunogen:

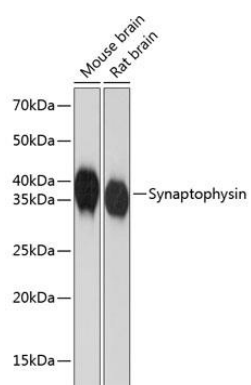
A synthesized peptide derived from human Synaptophysin

### Storage:

Store at -20°C. Avoid freeze / thaw cycles. Buffer: PBS with 0.02% sodium azide, 0.05% BSA, 50% glycerol, pH7.3.

## Product Images

---



Western blot - Synaptophysin Rabbit mAb (CAB19122)