

VCAM1 Rabbit Monoclonal Antibody



CAB19131

Product Information

Size:

20uL, 50uL, 100uL, 200uL

Observed MW:

110KDa

Calculated MW:

100kDa

Applications:

WB IF

Reactivity:

Mouse, Rat

Protein Background

This gene is a member of the Ig superfamily and encodes a cell surface sialoglycoprotein expressed by cytokine-activated endothelium. This type I membrane protein mediates leukocyte-endothelial cell adhesion and signal transduction, and may play a role in the development of atherosclerosis and rheumatoid arthritis. Three alternatively spliced transcripts encoding different isoforms have been described for this gene. [provided by RefSeq, Dec 2010]

Immunogen information

Gene ID:

7412

Uniprot

P19320

Synonyms:

CD106; INCAM-100; VCAM1

Antibody Information

Recommended dilutions:

WB 1:500 - 1:2000 IF 1:50 - 1:200

Source:

Rabbit

Isotype:

IgG

Purification:

Affinity purification

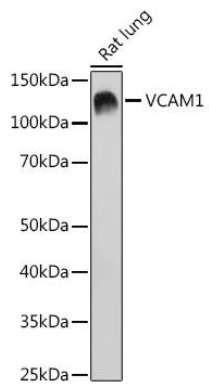
Immunogen:

A synthesized peptide derived from human VCAM1

Storage:

Store at -20°C. Avoid freeze / thaw cycles. Buffer: PBS with 0.02% sodium azide, 0.05% BSA, 50% glycerol, pH7.3.

Product Images



Western blot - VCAM1 Rabbit mAb (CAB19131)