

DLC1 Rabbit Polyclonal Antibody



CAB1921

Product Information

Size:

20uL, 50uL, 100uL, 200uL

Observed MW:

171kDa

Calculated MW:

50kDa/54kDa/114kDa/122kDa/126kDa/170kDa

Applications:

WB IHC

Reactivity:

Mouse, Rat

Antibody Information

Recommended dilutions:

WB 1:500 - 1:2000 IHC 1:50 - 1:200

Source:

Rabbit

Isotype:

IgG

Purification:

Affinity purification

Protein Background

This gene encodes a GTPase-activating protein (GAP) that is a member of the rhoGAP family of proteins which play a role in the regulation of small GTP-binding proteins. GAP family proteins participate in signaling pathways that regulate cell processes involved in cytoskeletal changes. This gene functions as a tumor suppressor gene in a number of common cancers, including prostate, lung, colorectal, and breast cancers. Multiple transcript variants due to alternative promoters and alternative splicing have been found for this gene.

Immunogen information

Gene ID:

10395

Uniprot

Q96QB1

Synonyms:

DLC1; ARHGAP7; HP; STARD12; p122-RhoGAP

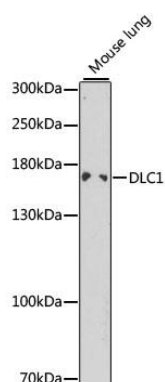
Immunogen:

Recombinant fusion protein containing a sequence corresponding to amino acids 204-463 of human DLC1 (NP_079043.3).

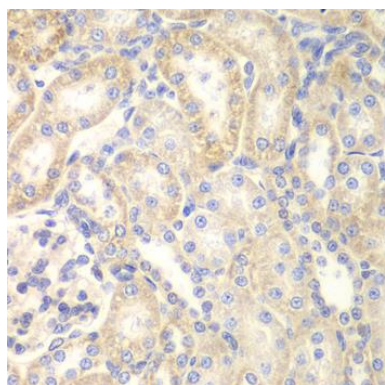
Storage:

Store at -20°C. Avoid freeze / thaw cycles. Buffer: PBS with 0.02% sodium azide, 50% glycerol, pH7.3.

Product Images



Western blot analysis of extracts of mouse lung, using DLC1 antibody (CAB1921) at 1:1000 dilution. Secondary antibody: HRP Goat Anti-Rabbit IgG (H+L) (CABS014) at 1:10000 dilution. Lysates/proteins: 25ug per lane. Blocking buffer: 3% nonfat dry milk in TBST. Detection: ECL Enhanced Kit (CABM00021).



Immunohistochemistry of paraffin-embedded rat kidney using DLC1 antibody (CAB1921) at dilution of 1:200 (40x lens).