

GNAI3 Rabbit Polyclonal Antibody



CAB1922

Product Information

Size:

20uL, 50uL, 100uL, 200uL

Observed MW:

41-45kDa

Calculated MW:

40kDa

Applications:

WB IHC

Reactivity:

Human, Rat

Protein Background

Guanine nucleotide-binding proteins (G proteins) are involved as modulators or transducers in various transmembrane signaling pathways. G proteins are composed of 3 units: alpha, beta and gamma. This gene encodes an alpha subunit and belongs to the G-alpha family. Mutation in this gene, resulting in a gly40-to-arg substitution, is associated with auriculocondylar syndrome, and shown to affect downstream targets in the G protein-coupled endothelin receptor pathway.

Immunogen information

Gene ID:

2773

Uniprot

P08754

Synonyms:

GNAI3; 87U6; ARCND1

Antibody Information

Recommended dilutions:

WB 1:1000 - 1:2000 IHC

1:50 - 1:100

Source:

Rabbit

Isotype:

IgG

Purification:

Affinity purification

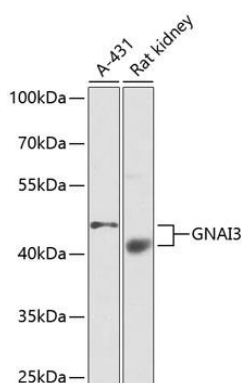
Immunogen:

A synthetic peptide corresponding to a sequence within amino acids 1-100 of human GNAI3 (NP_006487.1).

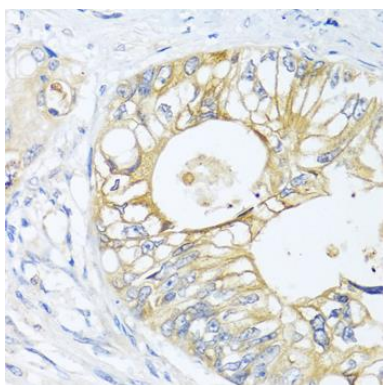
Storage:

Store at -20°C. Avoid freeze / thaw cycles. Buffer: PBS with 0.02% sodium azide, 50% glycerol, pH7.3.

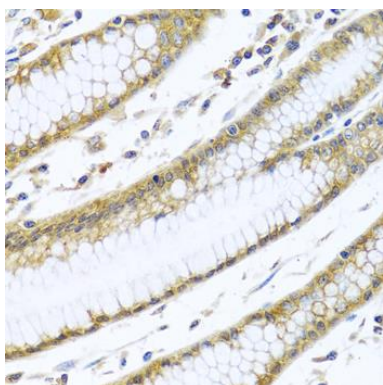
Product Images



Western blot analysis of extracts of various cell lines, using GNAI3 antibody (CAB1922) at 1:1000 dilution. Secondary antibody: HRP Goat Anti-Rabbit IgG (H+L) (CABS014) at 1:10000 dilution. Lysates/proteins: 25ug per lane. Blocking buffer: 3% nonfat dry milk in TBST. Detection: ECL Enhanced Kit (CABM00021). Exposure time: 30s.



Immunohistochemistry of paraffin-embedded human colon carcinoma using GNAI3 antibody (CAB1922) at dilution of 1:100 (40x lens).



Immunohistochemistry of paraffin-embedded human stomach using GNAI3 antibody (CAB1922) at dilution of 1:100 (40x lens).