

# MSR1 Rabbit Polyclonal Antibody



CAB1923

## Product Information

### Size:

20uL, 50uL, 100uL, 200uL

### Observed MW:

70-90kDa

### Calculated MW:

39kDa/42kDa/49kDa

### Applications:

WB IF

### Reactivity:

Human, Mouse, Rat

## Antibody Information

### Recommended dilutions:

WB 1:500 - 1:2000 IF 1:10 - 1:100

### Source:

Rabbit

### Isotype:

IgG

### Purification:

Affinity purification

## Protein Background

This gene encodes the class A macrophage scavenger receptors, which include three different types (1, 2, 3) generated by alternative splicing of this gene. These receptors or isoforms are macrophage-specific trimeric integral membrane glycoproteins and have been implicated in many macrophage-associated physiological and pathological processes including atherosclerosis, Alzheimer's disease, and host defense. The isoforms type 1 and type 2 are functional receptors and are able to mediate the endocytosis of modified low density lipoproteins (LDLs). The isoform type 3 does not internalize modified LDL (acetyl-LDL) despite having the domain shown to mediate this function in the types 1 and 2 isoforms. It has an altered intracellular processing and is trapped within the endoplasmic reticulum, making it unable to perform endocytosis. The isoform type 3 can inhibit the function of isoforms type 1 and type 2 when co-expressed, indicating a dominant negative effect and suggesting a mechanism for regulation of scavenger receptor activity in macrophages.

## Immunogen information

### Gene ID:

4481

### Uniprot

P21757

### Synonyms:

MSR1; CD204; SCARA1; SR-A; SR-AI; SR-AII; SR-AIII; SRA; phSR1; phSR2

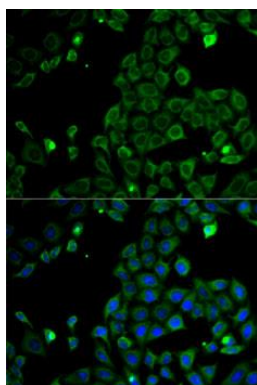
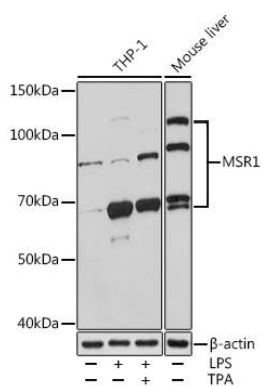
### Immunogen:

Recombinant fusion protein containing a sequence corresponding to amino acids 192-451 of human MSR1 (NP\_619729.1).

### Storage:

Store at -20°C. Avoid freeze / thaw cycles. Buffer: PBS with 0.02% sodium azide, 50% glycerol, pH7.3.

## Product Images



Western blot analysis of extracts of various cell lines, using MSR1 Rabbit pAb (CAB1923) at 1:1000 dilution. THP-1 cells were treated by LPS (1 ug/mL) at 37°C for 8 hours and PMA/TPA (200nM) for 30 minutes after serum-starvation for 16-20 hours. Secondary antibody: HRP Goat Anti-Rabbit IgG (H+L) (CABS014) at 1:10000 dilution. Lysates/proteins: 25ug per lane. Blocking buffer: 3% BSA. Detection: ECL Basic Kit (CABM00020). Exposure time: 1s.

Immunofluorescence analysis of HeLa cells using MSR1 antibody (CAB1923). Blue: DAPI for nuclear staining.