

PKLR Rabbit Polyclonal Antibody



CAB1924

Product Information

Size:

20uL, 50uL, 100uL, 200uL

Observed MW:

62kDa

Calculated MW:

58kDa/61kDa

Applications:

WB IHC

Reactivity:

Human

Antibody Information

Recommended dilutions:

WB 1:500 - 1:2000 IHC 1:50 - 1:200

Source:

Rabbit

Isotype:

IgG

Purification:

Affinity purification

Protein Background

The protein encoded by this gene is a pyruvate kinase that catalyzes the transphosphorylation of phosphoenolpyruvate into pyruvate and ATP, which is the rate-limiting step of glycolysis. Defects in this enzyme, due to gene mutations or genetic variations, are the common cause of chronic hereditary nonspherocytic hemolytic anemia (CNSHA or HNSHA). Multiple transcript variants encoding different isoforms have been found for this gene.

Immunogen information

Gene ID:

5313

Uniprot

P30613

Synonyms:

PKLR; PK1; PKL; PKR; PKRL; RPK

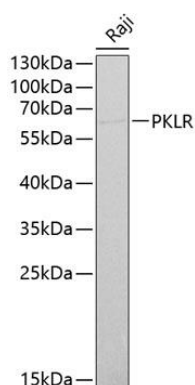
Immunogen:

Recombinant fusion protein containing a sequence corresponding to amino acids 375-574 of human PKLR (NP_000289.1).

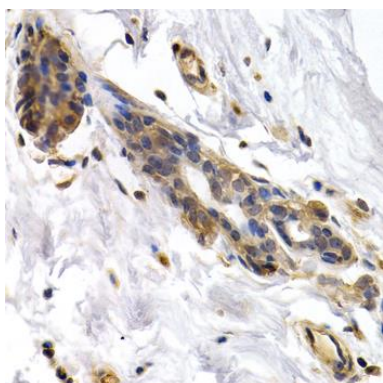
Storage:

Store at -20°C. Avoid freeze / thaw cycles. Buffer: PBS with 0.02% sodium azide, 50% glycerol, pH7.3.

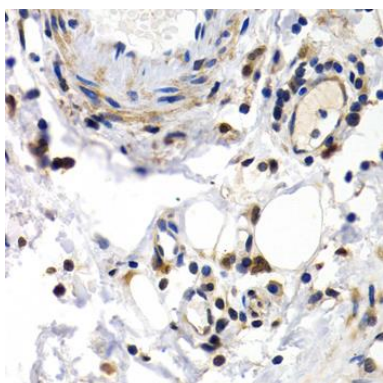
Product Images



Western blot analysis of extracts of Raji cells, using PKLR antibody (CAB1924) at 1:1000 dilution. Secondary antibody: HRP Goat Anti-Rabbit IgG (H+L) (CABS014) at 1:10000 dilution. Lysates/proteins: 25ug per lane. Blocking buffer: 3% nonfat dry milk in TBST.



Immunohistochemistry of paraffin-embedded human normal breast using PKLR antibody (CAB1924) at dilution of 1:200 (40x lens).



Immunohistochemistry of paraffin-embedded human normal colon using PKLR antibody (CAB1924) at dilution of 1:200 (40x lens).