

PPBP Rabbit Polyclonal Antibody



CAB1925

Product Information

Size:

20uL, 50uL, 100uL, 200uL

Observed MW:

14kDa

Calculated MW:

13kDa

Applications:

WB IHC

Reactivity:

Human

Antibody Information

Recommended dilutions:

WB 1:500 - 1:1000 IHC 1:50
- 1:100

Source:

Rabbit

Isotype:

IgG

Purification:

Affinity purification

Protein Background

The protein encoded by this gene is a platelet-derived growth factor that belongs to the CXC chemokine family. This growth factor is a potent chemoattractant and activator of neutrophils. It has been shown to stimulate various cellular processes including DNA synthesis, mitosis, glycolysis, intracellular cAMP accumulation, prostaglandin E2 secretion, and synthesis of hyaluronic acid and sulfated glycosaminoglycan. It also stimulates the formation and secretion of plasminogen activator by synovial cells. The protein also is an antimicrobial protein with bactericidal and antifungal activity.

Immunogen information

Gene ID:

5473

Uniprot

P02775

Synonyms:

PPBP; B-TG1; Beta-TG; CTAP-III; CTAP3; CTAPIII; CXCL7; LA-PF4;
LDGF; MDGF; NAP-2; PBP; SCYB7; TC1; TC2; TGB; TGB1; THBGB;
THBGB1

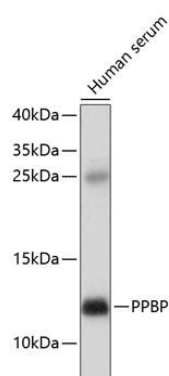
Immunogen:

Recombinant fusion protein containing a sequence corresponding to amino acids 31-128 of human PPBP (NP_002695.1).

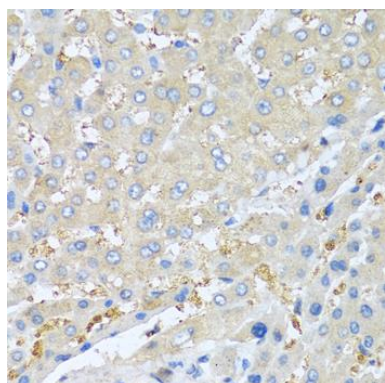
Storage:

Store at -20°C. Avoid freeze / thaw cycles. Buffer: PBS with 0.02% sodium azide, 50% glycerol, pH7.3.

Product Images



Western blot analysis of extracts of human serum, using PPBP antibody (CAB1925) at 1:1000 dilution. Secondary antibody: HRP Goat Anti-Rabbit IgG (H+L) (CABS014) at 1:10000 dilution. Lysates/proteins: 25ug per lane. Blocking buffer: 3% nonfat dry milk in TBST. Detection: ECL Basic Kit (CABM00020). Exposure time: 5min.



Immunohistochemistry of paraffin-embedded human liver cancer using PPBP antibody (CAB1925) at dilution of 1:100 (40x lens).