

# BUB1 Rabbit Polyclonal Antibody



CAB1929

## Product Information

### Size:

20uL, 50uL, 100uL, 200uL

### Observed MW:

133kDa

### Calculated MW:

115kDa/120kDa/122kDa

### Applications:

WB IHC

### Reactivity:

Human, Mouse, Rat

## Antibody Information

### Recommended dilutions:

WB 1:500 - 1:2000 IHC 1:50  
- 1:200

### Source:

Rabbit

### Isotype:

IgG

### Purification:

Affinity purification

## Protein Background

This gene encodes a serine/threonine-protein kinase that play a central role in mitosis. The encoded protein functions in part by phosphorylating members of the mitotic checkpoint complex and activating the spindle checkpoint. This protein also plays a role in inhibiting the activation of the anaphase promoting complex/cyclosome. This protein may also function in the DNA damage response. Mutations in this gene have been associated with aneuploidy and several forms of cancer. Alternate splicing results in multiple transcript variants.

## Immunogen information

### Gene ID:

699

### Uniprot

O43683

### Synonyms:

BUB1; BUB1A; BUB1L; hBUB1

### Immunogen:

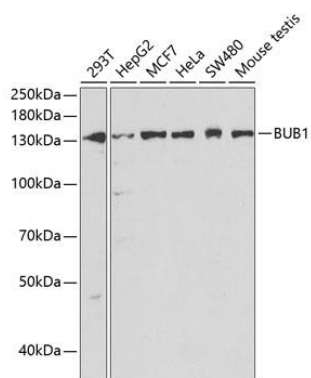
Recombinant fusion protein containing a sequence corresponding to amino acids 1-300 of human BUB1 (NP\_004327.1).

### Storage:

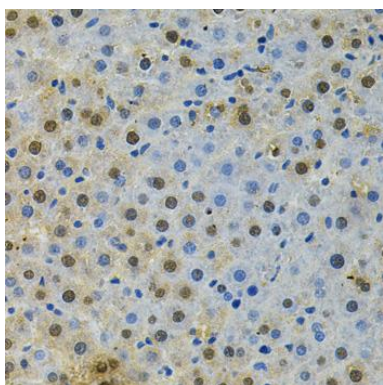
Store at -20°C. Avoid freeze / thaw cycles. Buffer: PBS with 0.02% sodium azide, 50% glycerol, pH7.3.

## Product Images

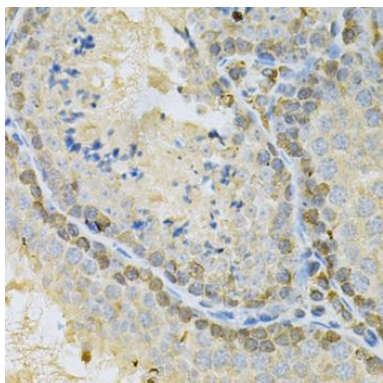
---



Western blot analysis of extracts of various cell lines, using BUB1 antibody (CAB1929) at 1:1000 dilution. Secondary antibody: HRP Goat Anti-Rabbit IgG (H+L) (CABS014) at 1:10000 dilution. Lysates/proteins: 25ug per lane. Blocking buffer: 3% nonfat dry milk in TBST.



Immunohistochemistry of paraffin-embedded rat liver using BUB1 Antibody (CAB1929) at dilution of 1:200 (40x lens).



Immunohistochemistry of paraffin-embedded mouse testis using BUB1 Antibody (CAB1929) at dilution of 1:200 (40x lens).