

ICAM1 Rabbit Monoclonal Antibody



CAB19300

Product Information

Size:

20uL, 50uL, 100uL, 200uL

Observed MW:

89KDa/100KDa

Calculated MW:

89kDa

Applications:

WB IHC

Reactivity:

Human

Protein Background

This gene encodes a cell surface glycoprotein which is typically expressed on endothelial cells and cells of the immune system. It binds to integrins of type CD11a / CD18, or CD11b / CD18 and is also exploited by Rhinovirus as a receptor. [provided by RefSeq, Jul 2008]

Immunogen information

Gene ID:

3383

Uniprot

P05362

Synonyms:

BB2; CD54; P3.58; ICAM1

Antibody Information

Recommended dilutions:

WB 1:500 - 1:2000 IHC 1:50
- 1:200

Source:

Rabbit

Isotype:

IgG

Purification:

Affinity purification

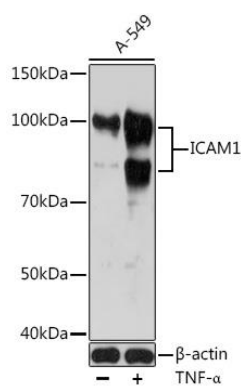
Immunogen:

A synthesized peptide derived from human ICAM1

Storage:

Store at -20°C. Avoid freeze / thaw cycles. Buffer: PBS with 0.02% sodium azide, 0.05% BSA, 50% glycerol, pH7.3.

Product Images



Western blot - ICAM1 Rabbit mAb (CAB19300)