

Caspase-4 Rabbit Polyclonal Antibody



CAB19305

Product Information

Size:

20uL, 50uL, 100uL

Observed MW:

43kDa

Calculated MW:

Applications:

WB IHC

Reactivity:

Human

Antibody Information

Recommended dilutions:

WB 1:500 - 1:2000 IHC 1:50
- 1:200

Source:

Rabbit

Isotype:

IgG

Purification:

Affinity purification

Protein Background

This gene encodes a protein that is a member of the cysteine-aspartic acid protease (caspase) family. Sequential activation of caspases plays a central role in the execution-phase of cell apoptosis. Caspases exist as inactive proenzymes composed of a prodomain and a large and small protease subunit. Activation of caspases requires proteolytic processing at conserved internal aspartic residues to generate a heterodimeric enzyme consisting of the large and small subunits. This caspase is able to cleave and activate its own precursor protein, as well as caspase 1 precursor. When overexpressed, this gene induces cell apoptosis. Alternative splicing results in transcript variants encoding distinct isoforms. [provided by RefSeq, Jul 2008]

Immunogen information

Gene ID:

837

Uniprot

P49662

Synonyms:

ICE(rel)II; ICEREL-II; ICH-2; Mih1; Mih1/TX; TX; CASP4

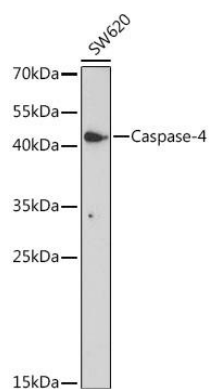
Immunogen:

Recombinant protein of human Caspase-4.

Storage:

Store at -20°C. Avoid freeze / thaw cycles. Buffer: PBS with 0.02% sodium azide, 50% glycerol, pH7.3.

Product Images



Western blot - Caspase-4 Rabbit pAb (CAB19305)