

GLO1 Rabbit Polyclonal Antibody



CAB1932

Product Information

Size:

20uL, 50uL, 100uL, 200uL

Observed MW:

21kDa

Calculated MW:

19kDa/20kDa

Applications:

WB IHC IF

Reactivity:

Human, Mouse

Protein Background

The enzyme encoded by this gene is responsible for the catalysis and formation of S-lactoyl-glutathione from methylglyoxal condensation and reduced glutathione. Glyoxalase I is linked to HLA and is localized to 6p21.3-p21.1, between HLA and the centromere.

Immunogen information

Gene ID:

2739

Uniprot

Q04760

Synonyms:

GLO1; GLOD1; GLYI; HEL-S-74

Antibody Information

Recommended dilutions:

WB 1:500 - 1:2000 IHC 1:50
- 1:200 IF 1:50 - 1:200

Source:

Rabbit

Isotype:

IgG

Purification:

Affinity purification

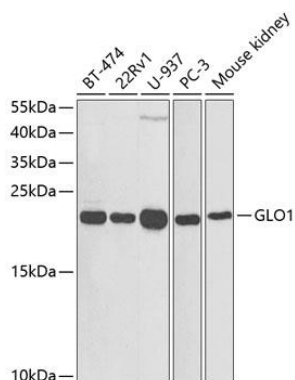
Immunogen:

Recombinant fusion protein containing a sequence corresponding to amino acids 1-184 of human GLO1 (NP_006699.2).

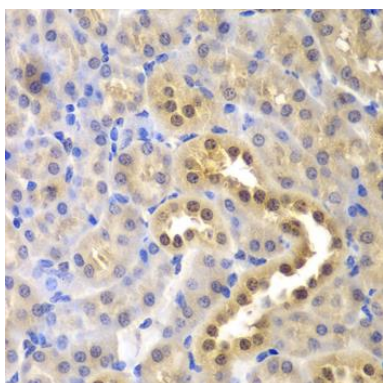
Storage:

Store at -20°C. Avoid freeze / thaw cycles. Buffer: PBS with 0.02% sodium azide, 50% glycerol, pH7.3.

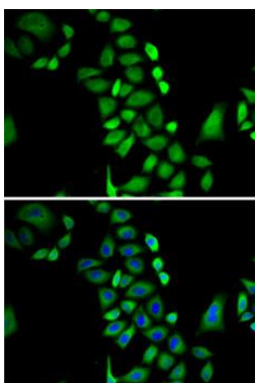
Product Images



Western blot analysis of extracts of various cell lines, using GLO1 antibody (CAB1932) at 1:1000 dilution. Secondary antibody: HRP Goat Anti-Rabbit IgG (H+L) (CABS014) at 1:10000 dilution. Lysates/proteins: 25ug per lane. Blocking buffer: 3% nonfat dry milk in TBST.



Immunohistochemistry of paraffin-embedded mouse kidney using GLO1 antibody (CAB1932) at dilution of 1:200 (40x lens).



Immunofluorescence analysis of A-549 cells using GLO1 antibody (CAB1932). Blue: DAPI for nuclear staining.