

[KO Validated] RAB27A Rabbit Polyclonal Antibody

CAB1934



Product Information

Size:

20uL, 50uL, 100uL, 200uL

Observed MW:

25kDa

Calculated MW:

24kDa

Applications:

WB IHC IF

Reactivity:

Human, Mouse

Protein Background

The protein encoded by this gene belongs to the small GTPase superfamily, Rab family. The protein is membrane-bound and may be involved in protein transport and small GTPase mediated signal transduction. Mutations in this gene are associated with Griscelli syndrome type 2. Alternative splicing occurs at this locus and four transcript variants encoding the same protein have been identified.

Immunogen information

Gene ID:

5873

Uniprot

P51159

Synonyms:

RAB27A; GS2; HsT18676; RAB27; RAM

Antibody Information

Recommended dilutions:

WB 1:500 - 1:2000 IHC 1:50
- 1:200 IF 1:10 - 1:100

Source:

Rabbit

Isotype:

IgG

Purification:

Affinity purification

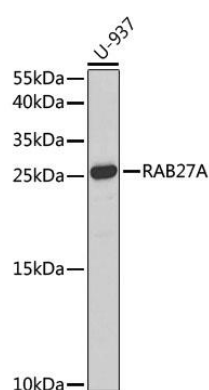
Immunogen:

Recombinant fusion protein containing a sequence corresponding to amino acids 1-221 of human RAB27A (NP_899057.1).

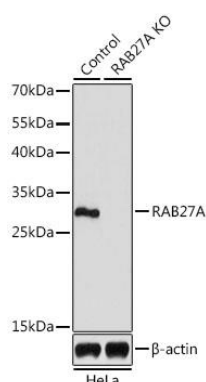
Storage:

Store at -20°C. Avoid freeze / thaw cycles. Buffer: PBS with 0.02% sodium azide, 50% glycerol, pH7.3.

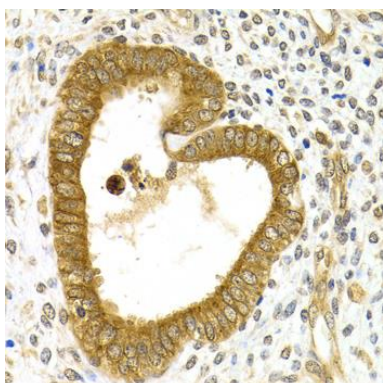
Product Images



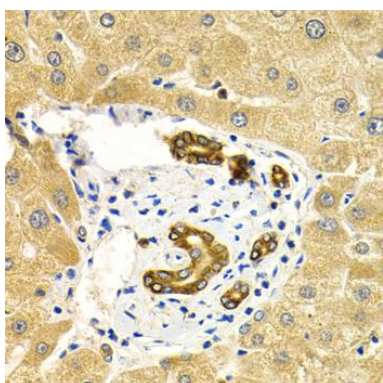
Western blot analysis of extracts of U-937 cells, using RAB27A antibody (CAB1934) at 1:1000 dilution. Secondary antibody: HRP Goat Anti-Rabbit IgG (H+L) (CABS014) at 1:10000 dilution. Lysates/proteins: 25ug per lane. Blocking buffer: 3% nonfat dry milk in TBST. Detection: ECL Basic Kit (CABM00020).



Western blot analysis of extracts from normal (control) and RAB27A knockout (KO) HeLa cells, using RAB27A antibody (CAB1934) at 1:1000 dilution. Secondary antibody: HRP Goat Anti-Rabbit IgG (H+L) (CABS014) at 1:10000 dilution. Lysates/proteins: 25ug per lane. Blocking buffer: 3% nonfat dry milk in TBST. Detection: ECL Basic Kit (CABM00020). Exposure time: 90s.



Immunohistochemistry of paraffin-embedded human adenomyosis using RAB27A Antibody (CAB1934) at dilution of 1:200 (40x lens).



Immunohistochemistry of paraffin-embedded human liver damage using RAB27A Antibody (CAB1934) at dilution of 1:200 (40x lens).