

S100A7 Rabbit Polyclonal Antibody



CAB1940

Product Information

Size:

20uL, 50uL, 100uL, 200uL

Observed MW:

Calculated MW:

11kDa

Applications:

IHC

Reactivity:

Human, Mouse, Rat

Antibody Information

Recommended dilutions:

IHC 1:50 - 1:200

Source:

Rabbit

Isotype:

IgG

Purification:

Affinity purification

Protein Background

The protein encoded by this gene is a member of the S100 family of proteins containing 2 EF-hand calcium-binding motifs. S100 proteins are localized in the cytoplasm and/or nucleus of a wide range of cells, and involved in the regulation of a number of cellular processes such as cell cycle progression and differentiation. S100 genes include at least 13 members which are located as a cluster on chromosome 1q21. This protein differs from the other S100 proteins of known structure in its lack of calcium binding ability in one EF-hand at the N-terminus. The protein is overexpressed in hyperproliferative skin diseases, exhibits antimicrobial activities against bacteria and induces immunomodulatory activities.

Immunogen information

Gene ID:

6278

Uniprot

P31151

Synonyms:

S100A7; PSOR1; S100A7c

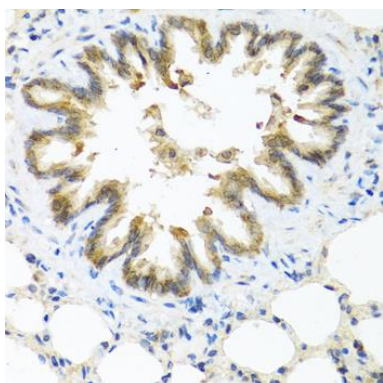
Immunogen:

Recombinant fusion protein containing a sequence corresponding to amino acids 1-101 of human S100A7 (NP_002954.2).

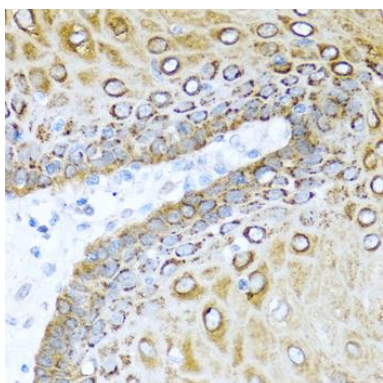
Storage:

Store at -20°C. Avoid freeze / thaw cycles. Buffer: PBS with 0.02% sodium azide, 50% glycerol, pH7.3.

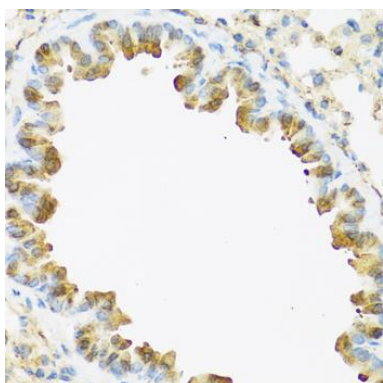
Product Images



Immunohistochemistry of paraffin-embedded rat lung using S100A7 antibody (CAB1940) at dilution of 1:100 (40x lens).



Immunohistochemistry of paraffin-embedded human esophagus using S100A7 antibody (CAB1940) at dilution of 1:100 (40x lens).



Immunohistochemistry of paraffin-embedded mouse lung using S100A7 antibody (CAB1940) at dilution of 1:100 (40x lens).